



Elgin Avenue, W9

£1,100,000

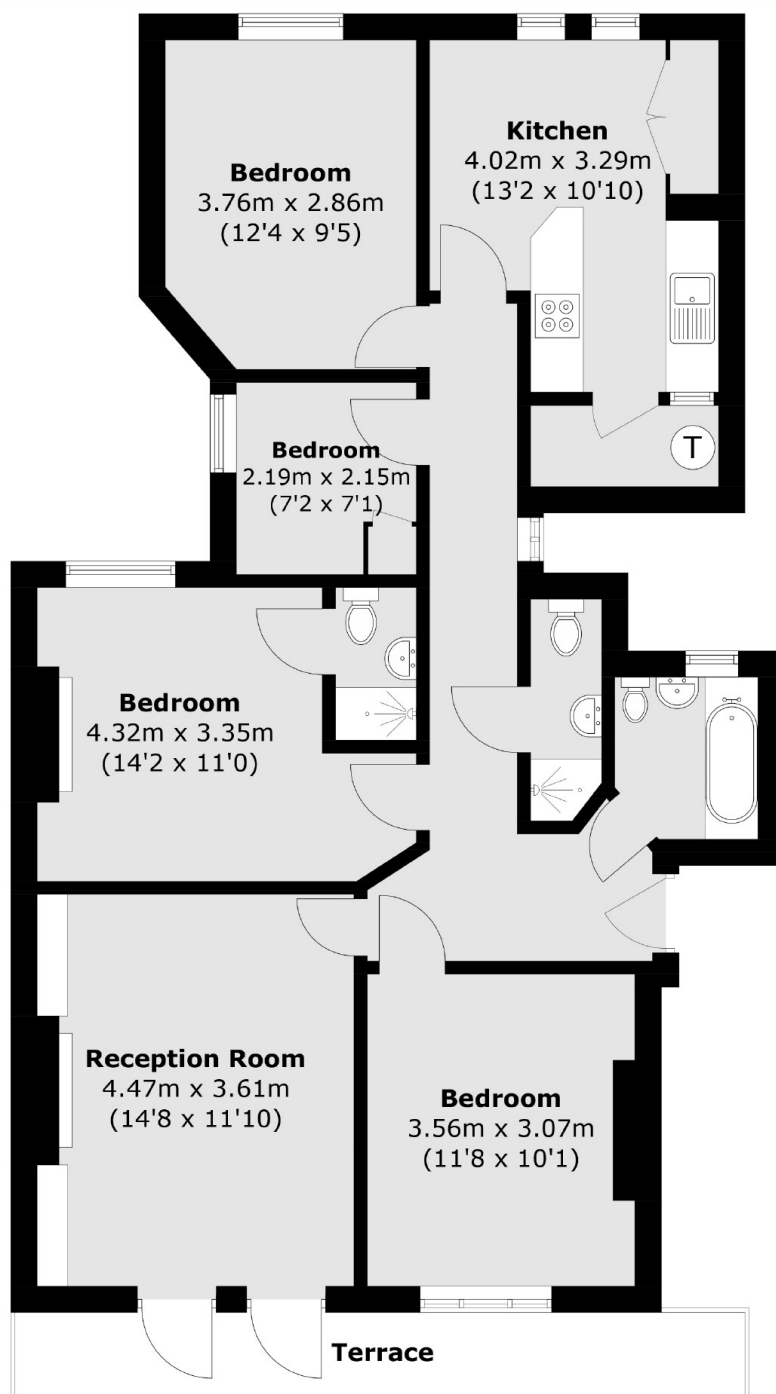
This third-floor, four-bedroom flat features high ceilings and access to a beautiful communal garden. The property offers a spacious reception room that opens onto a private balcony, an excellent fully fitted kitchen/breakfast room, a principal bedroom with an en-suite shower room, three additional bedrooms, a family bathroom, and an extra shower room with a W/C.

Biddulph Mansions is situated on a charming, tree-lined street along Elgin Avenue, perfectly positioned just moments away from the open spaces and sports facilities of Paddington Recreation Ground. Additionally, it is close to the shops, cafés, and restaurants of Lauderdale Parade, as well as Maida Vale Underground station on the Bakerloo Line.

Features

- Red Brick Mansion Block
- Private Balcony
- Four Bedrooms
- Communal Gardens
- Three Bathrooms
- Chain Free

Elgin Avenue, Maida Vale, W9



Total area (approx.): 91.4 sq. m (983.8 sq. ft)
Terrace (approx.): 8.0 sq. m (86.1 sq. ft)