



Carlton Hill, NW8

£950,000

This charming two-story maisonette is nestled within a tranquil gated residential area at the intersection of Carlton Hill, offering picturesque views of the sought-after Hamilton Terrace. The property boasts a pristine condition, featuring a newly renovated kitchen/breakfast room, a spacious reception room with a bay window, three bedrooms, and a family bathroom.

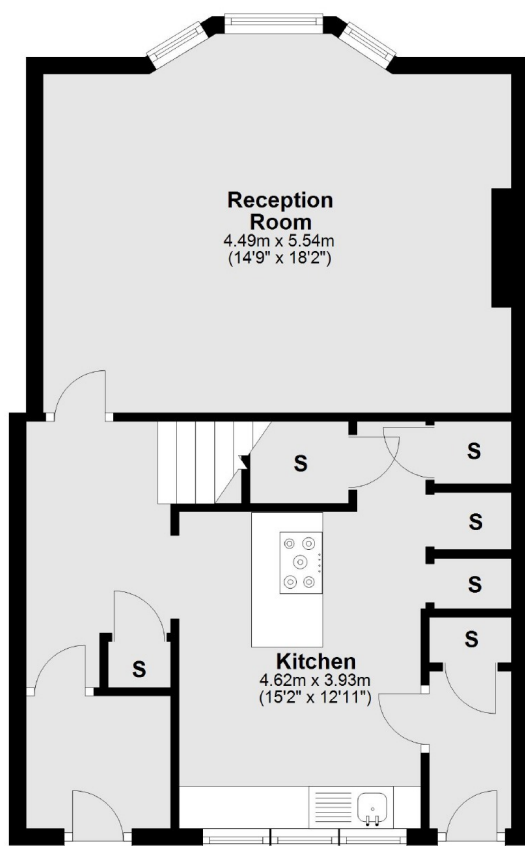
Bradby House sits at the crossroads of Carlton Hill and Hamilton Terrace, conveniently positioned less than half a mile away from Maida Vale Underground Station on the Bakerloo Line.

Features

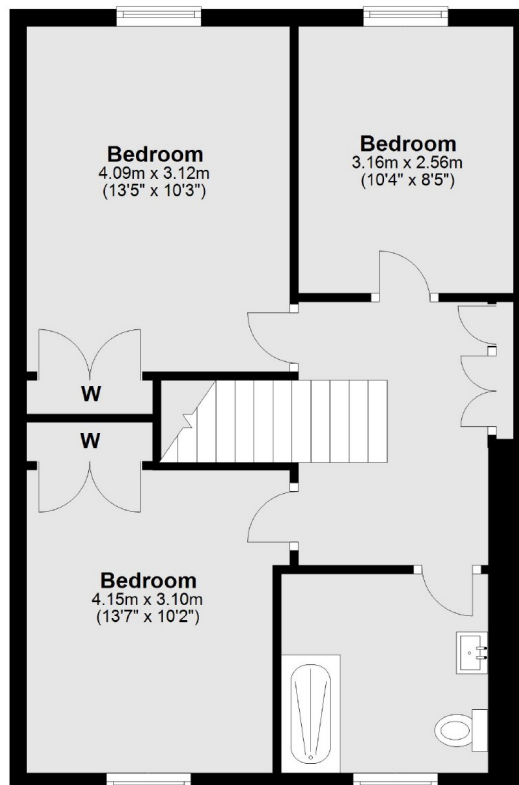
- Maisonette
- Great Condition
- Private Entrance
- Communal Gardens
- Gated Residential Development
- Off-Street Parking

Carlton Hill, London, NW8

Ground Floor



First Floor



Total area: approx. 101.8 sq. metres (1095.4 sq. feet)