



Shirland Road, W9

£946 Per week

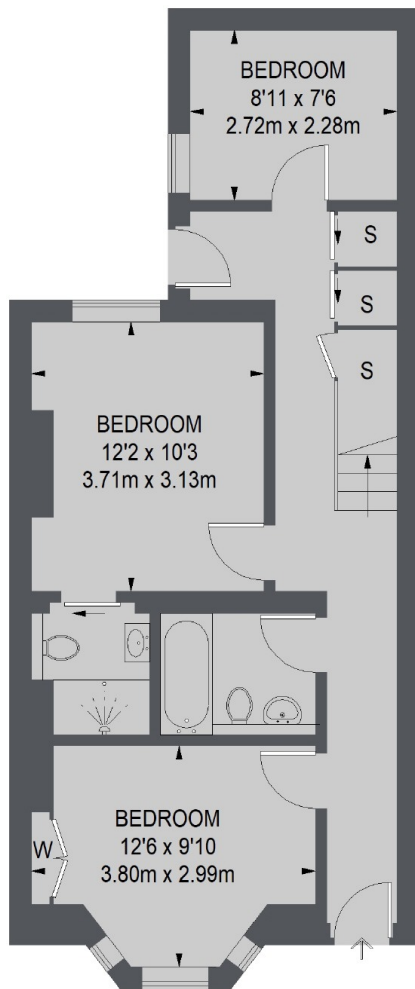
Split across the ground and lower ground floors, this four bedroom maisonette has a stylish open-plan reception, two bathrooms and a large private garden making the property ideal for a family.

Within easy reach of the Harrow Road, Queens Park and Little Venice, you are close to a number of local shops and coffee shops as well as numerous transport links.

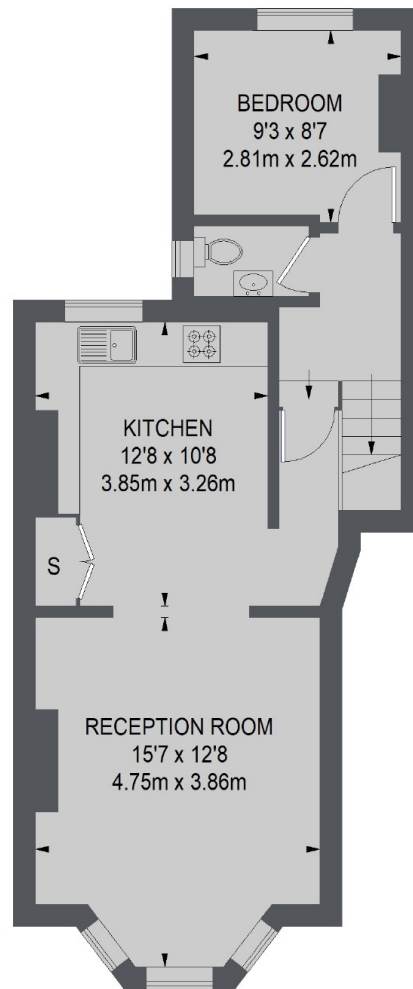
Features

Period Conversion
Maisonette
Four Bedrooms
Two Bathrooms
Private Garden
Great Location

Shirland Road,
Maida Vale, W9



LOWER GROUND FLOOR



GROUND FLOOR

TOTAL APPROX. FLOOR AREA
1059 SQ. FT. (98.4 SQ. M.)