



Hansel Road, NW6

£650,000

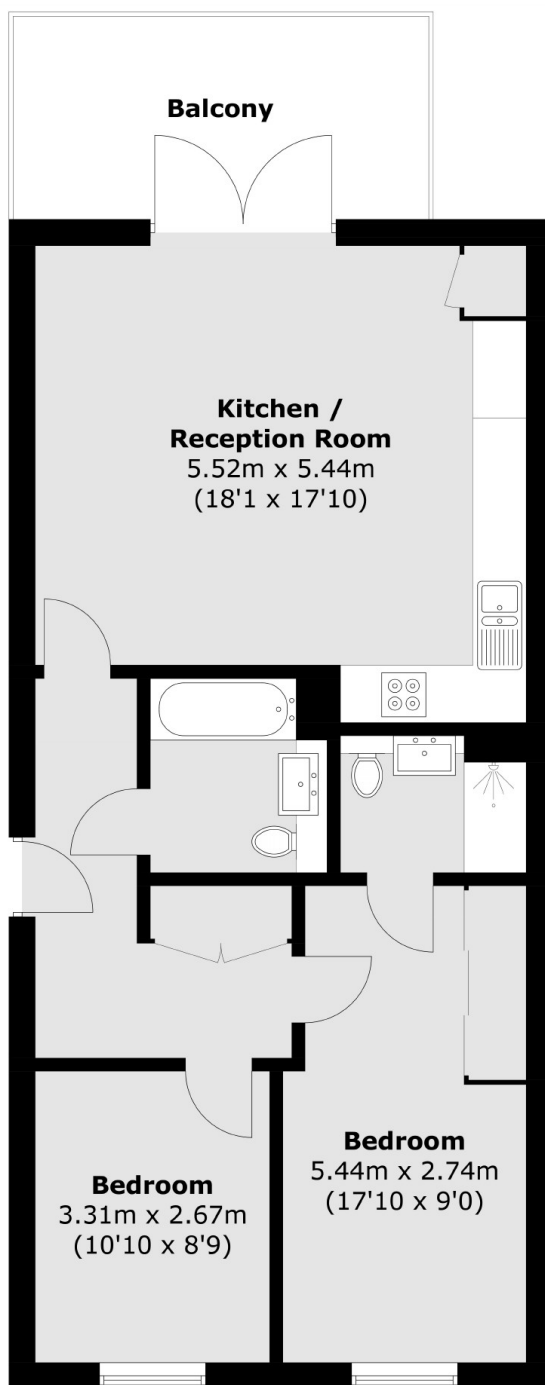
A spacious two-bedroom apartment, featuring two double bedrooms, one with an en-suite bathroom, and an additional second bathroom. This flat is presented in superb condition and includes a private balcony. Situated on the third floor of a contemporary building with elevator access, it also offers the convenience of secure private parking.

Perfectly situated adjacent to Paddington Recreation ground, this location offers the serene ambiance of Maida Vale and Little Venice, as well as the lively atmosphere of Kilburn Park and Queens Park.

Features

- Chain Free
- New Build Development
- Integrated White Goods
- Private Parking
- Communal Gardens
- Great Transport Links

Hansel Road, London, NW6



Total area (approx.): 70.6 sq. m (759.9 sq. ft)
Balcony area (approx.): 10.8 sq. m (116.2 sq. ft)