



## Goldney Road, W9

£650,000

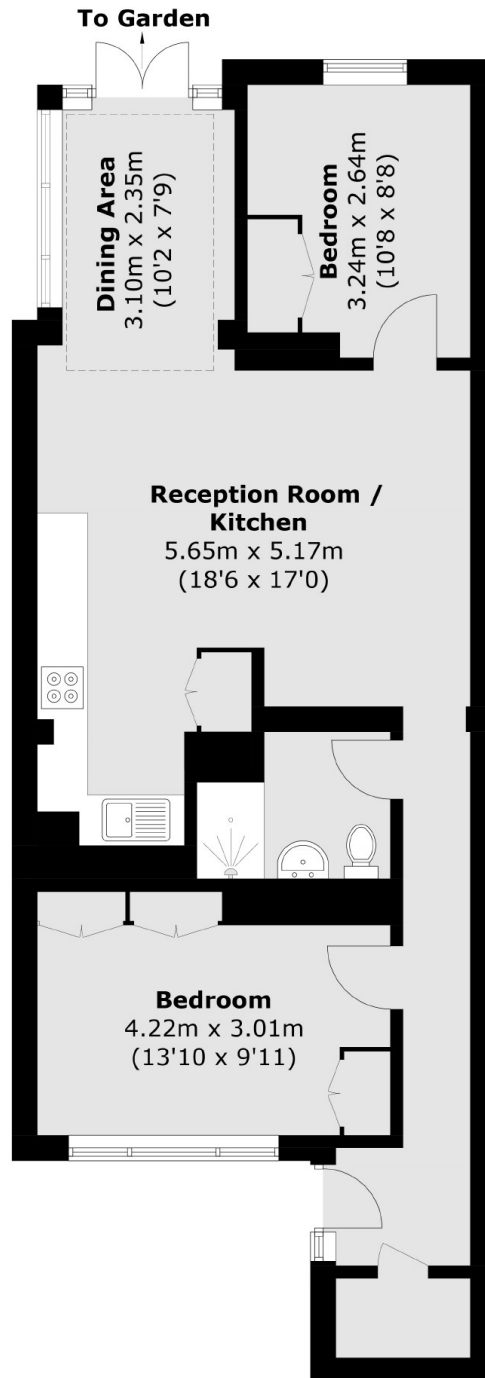
An attractive two double bedroom garden flat within a Victorian conversion. The flat offers a private courtyard entrance, and open plan reception/kitchen, a family bathroom, and a dining area opening onto a private rear garden.

Goldney Road is less than half a mile from multiple transport links to central London. It is walking distance of all the local amenities of Maida Vale and Westbourne Grove, along with the sporting facilities of Paddington Recreational Ground. The flat is moments away from Edbrooke Road playground, and outstanding rated Primary Schools.

### Features

- Two Double Bedrooms
- Leasehold
- Private Entrance
- Private Garden
- Chain Free
- Desirable Location

# Goldney Road, Maida Vale, W9



Total area (approx.): 67.3 sq. m (724.4 sq. ft)