

## Portnall Road, W9

£750,000

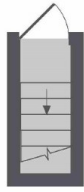
This three-bedroom property occupies the top two floors of a Victorian conversion. Recently renovated to a high standard, the flat boasts modern amenities including a sleek kitchen, bathrooms, and hardwood flooring throughout.

Portnall Road offers convenient access to Queens Park's array of local shops and cafes, as well as numerous transportation options connecting to Central London. Situated within a mile of Little Venice, Portobello, and Paddington Rec, it provides easy reach to these popular destinations.

### Features

- Newly Refurbished
- Victorian Conversion
- Two Bathrooms
- Top Floor Flat
- Wooden Flooring Throughout
- Chain Free

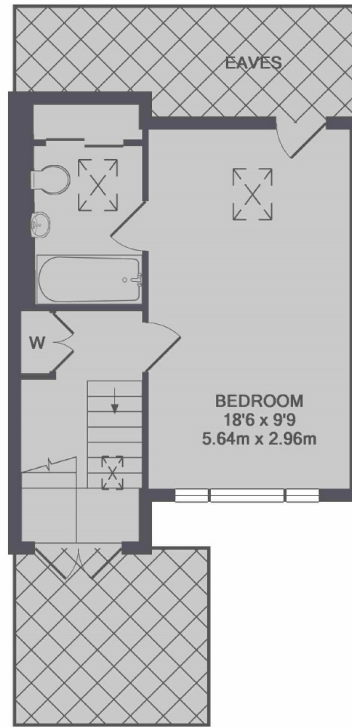
# Portnall Road, Maida Vale, W9



1ST FLOOR



2ND FLOOR



3RD FLOOR

TOTAL APPROX. FLOOR AREA 950 SQ.FT. (88.3 SQ.M.)

## Dexters

Maida Vale  
298 Elgin Avenue  
London  
W9 1JS  
Sales  
020 7266 2020

Energy Rating: D. We aim to make our particulars both accurate and reliable. However they are not guaranteed; nor do they form part of an offer or contract. If you require clarification on any points then please contact us, especially if you're traveling some distance to view. Please note that appliances and heating systems have not been tested and therefore no warranties can be given as to their good working order.



dexters.co.uk