



Shirland Road, W9

£553 Per week

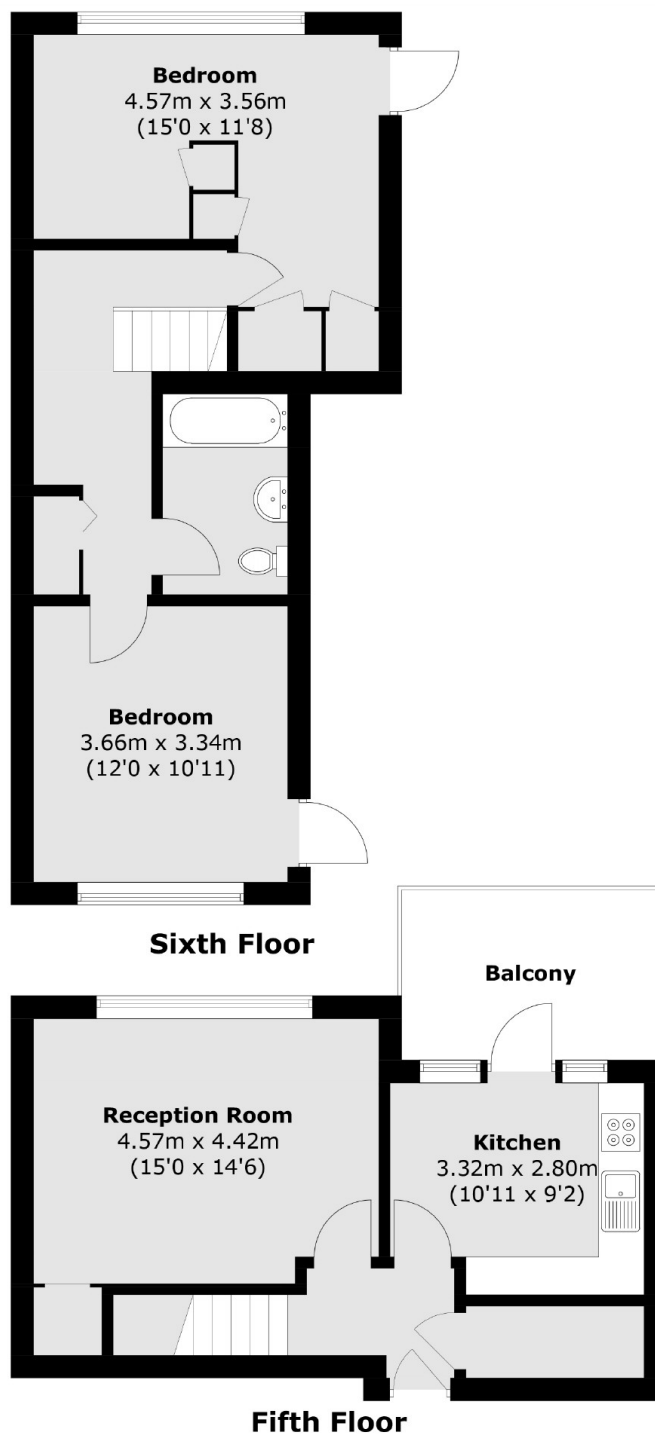
Recently refurbished, this two bedroom top floor flat, which has been updated throughout, has a large reception, a new kitchen and bathroom, two double bedrooms and a private balcony.

Just around the corner from the canal and the Waterway bar and restaurant, Charfield Court is close to the tube at Warwick Avenue and within walking distance of Paddington.

Features

- Recently Refurbished
- Split-Level Flat
- Two Bedrooms
- Private Balcony
- Passenger Lift
- Wooden Flooring

Shirland Road, Maida Vale, W9



Total area (approx.): 77.2 sq. m (830.9 sq. ft)
Balcony : 7.8 sq. m (83.9 sq. ft)