



Abercorn Place, NW8

£495,000

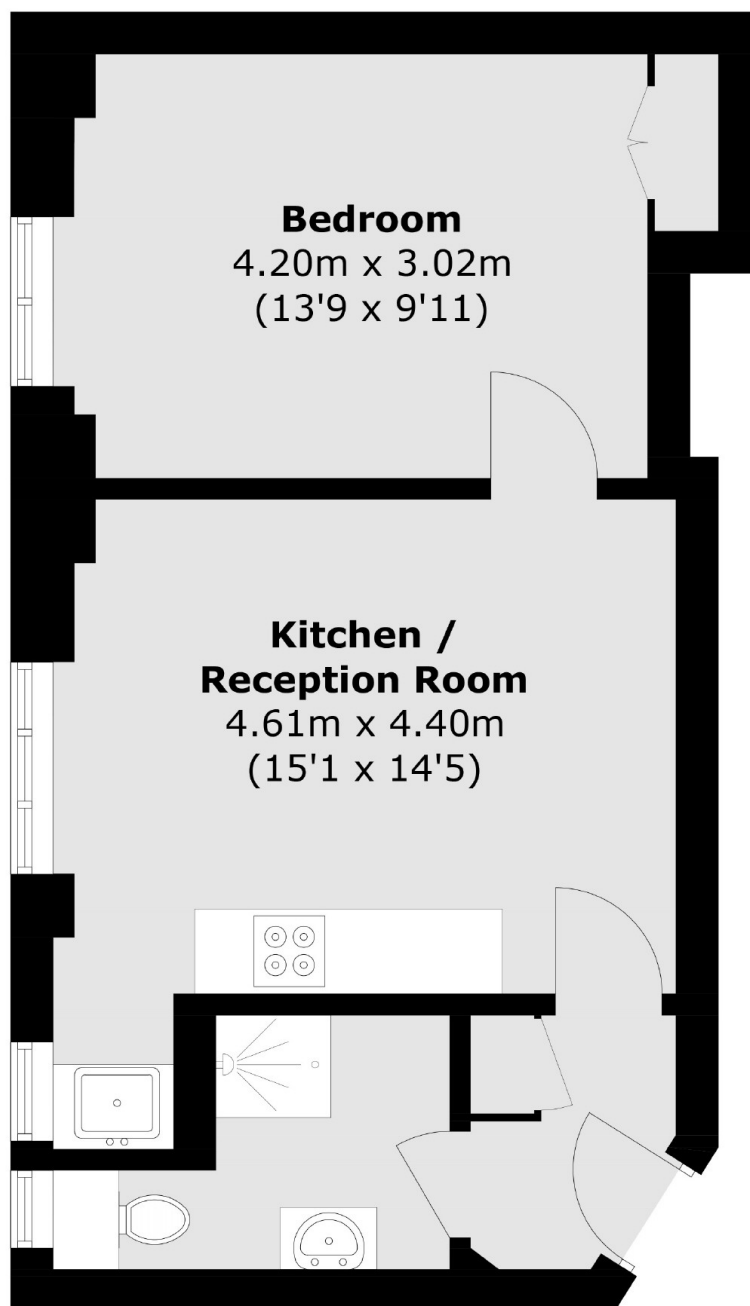
A recently refurbished one double bedroom apartment on the fifth floor in a portered block in St. John's Wood. Bright reception room, open plan kitchen, double bedroom with storage and a modern bathroom.

Abercorn Place is ideally located in between St. John's Wood and Maida Vale within easy access to Jubilee and Bakerloo Lines.

Features

Chain Free
Recently Refurbished
Porter Service & Lift
Communal Garden
Hot Water & Heating Included

Abercorn Place,
London, NW8



Total area (approx.): 37.7 sq. m (405.8 sq. ft)