



## Elgin Avenue, W9

£438 Per week

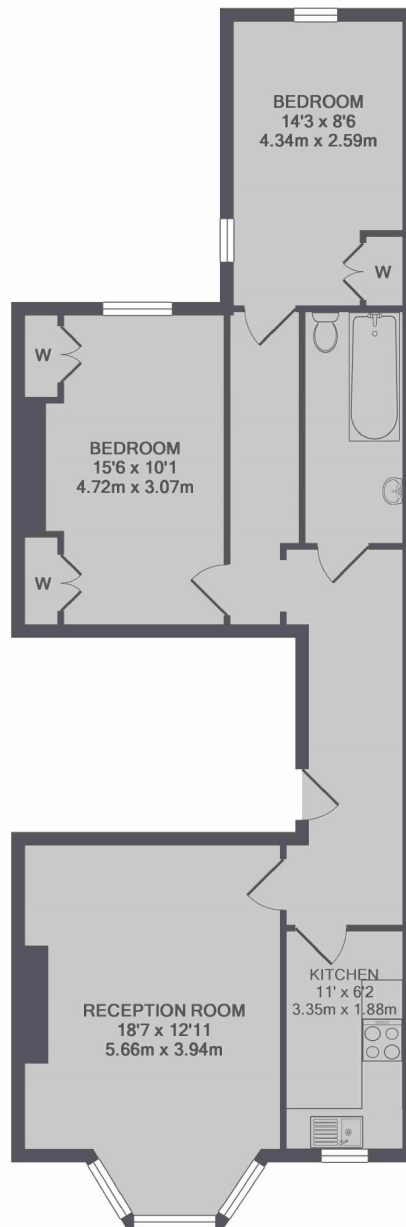
Located in a well-maintained period conversion overlooking Paddington rec, this first floor flat has two double bedrooms, a large lounge leading to a semi-separate kitchen and a contemporary bathroom suite.

Across the road from Maida Vale tube station and a Starbucks coffee shop, the property is ideally located to fully benefit from the vast amenities of Maida Vale, Paddington rec and the surrounding areas.

### Features

Period Conversion  
First Floor Flat  
Two Bedrooms  
Modern Finish  
Open-Plan Reception  
Fantastic Location

## Elgin Avenue, London, W9



TOTAL APPROX. FLOOR AREA 797 SQ.FT. (74.0 SQ.M.)

### Contact

To arrange a viewing call our office on the number below or visit our website.



Energy Rating: D. We aim to make our particulars both accurate and reliable. However they are not guaranteed; nor do they form part of an offer or contract. If you require clarification on any points then please contact us, especially if you're traveling some distance to view. Please note that appliances and heating systems have not been tested and therefore no warranties can be given as to their good working order.