

## Elgin Avenue, W9

£542 Per week

An exceptionally spacious one bedroom apartment situated on the first floor of a converted period house well located in Maida Vale. The property is well presented and comprises entrance hall, spacious reception with high ceilings and bay window, separate fitted kitchen, bathroom and double bedroom with built-in storage.

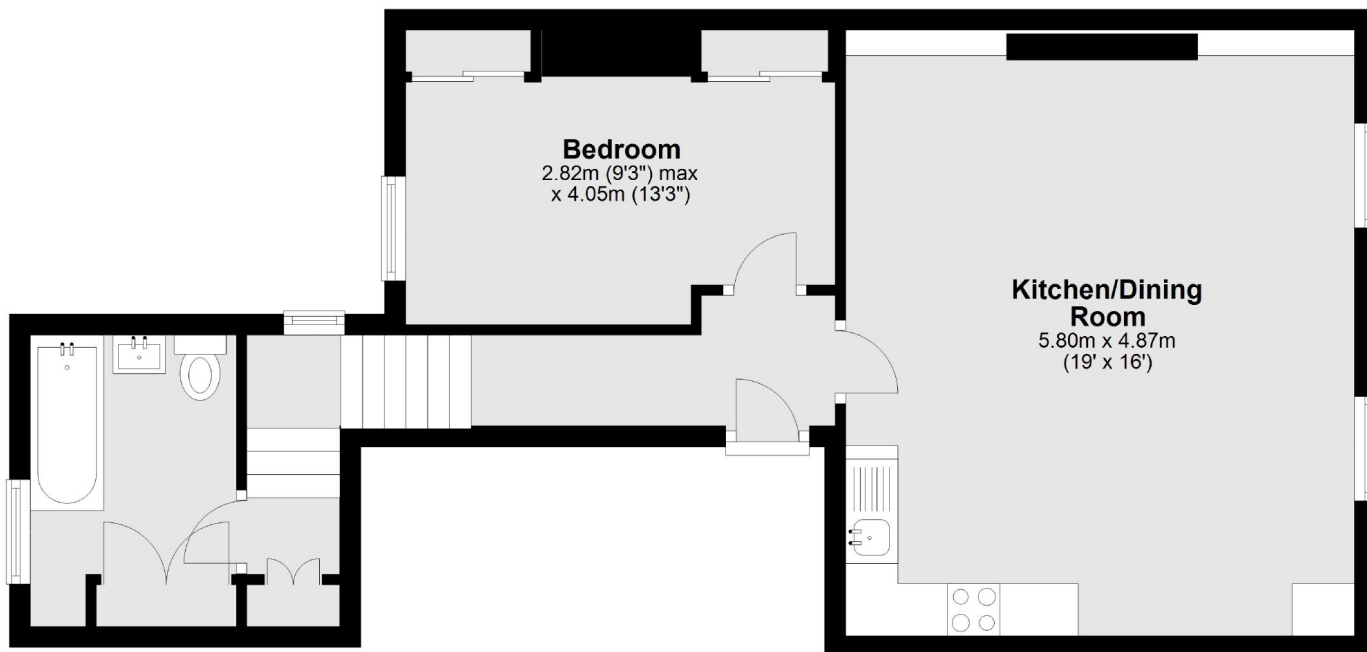
Ideally located on Elgin Avenue, the property is within close proximity of Maida Vale and Westbourne Park tube stations and all other local shops, cafés and restaurants, as well as Paddington Rec.

### Features

- One bedroom
- Period Features
- Ample storage
- High Ceilings
- Open Plan
- Furnished

Elgin Avenue,  
Maida Vale, W9

## First Floor



Total area: approx. 53.0 sq. metres (570.6 sq. feet)