



## Saltram Crescent, W9

### £400,000

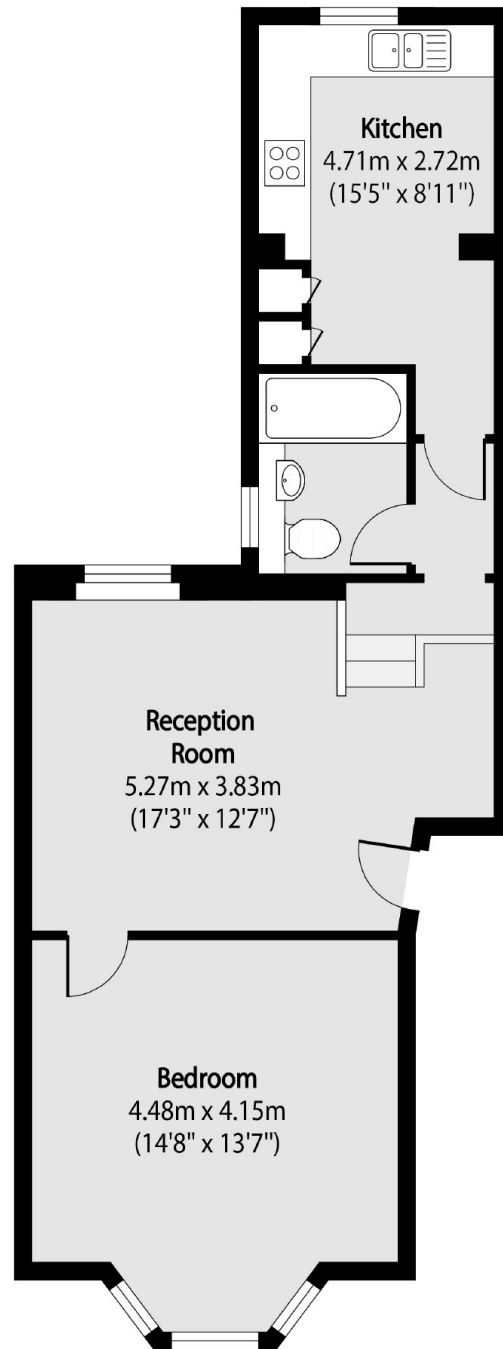
A one double bedroom flat set on the raised ground floor of an end of terrace Victorian conversion. This spacious flat has high ceilings and plenty of natural light, with reception room, bathroom and a separate eat-in kitchen.

Saltram Crescent is a tree-lined residential street with Paddington recreation park and Little Venice's canal-side restaurants in close distance. Local transport links include Underground stations at Queen's Park (Bakerloo Line and Overground), Westbourne Park (Hammersmith & City Line) and Maida Vale (Bakerloo).

### Features

- Raised Ground Floor
- Ample Storage Space
- Long Leasehold
- Great Transport Links
- Chain Free
- End Of Terrace

# Saltram Crescent, Maida Vale, W9



Total area (approx): 53.15 sq m (572 sq. ft)