



Marylands Road, W9

£1,038 Per week

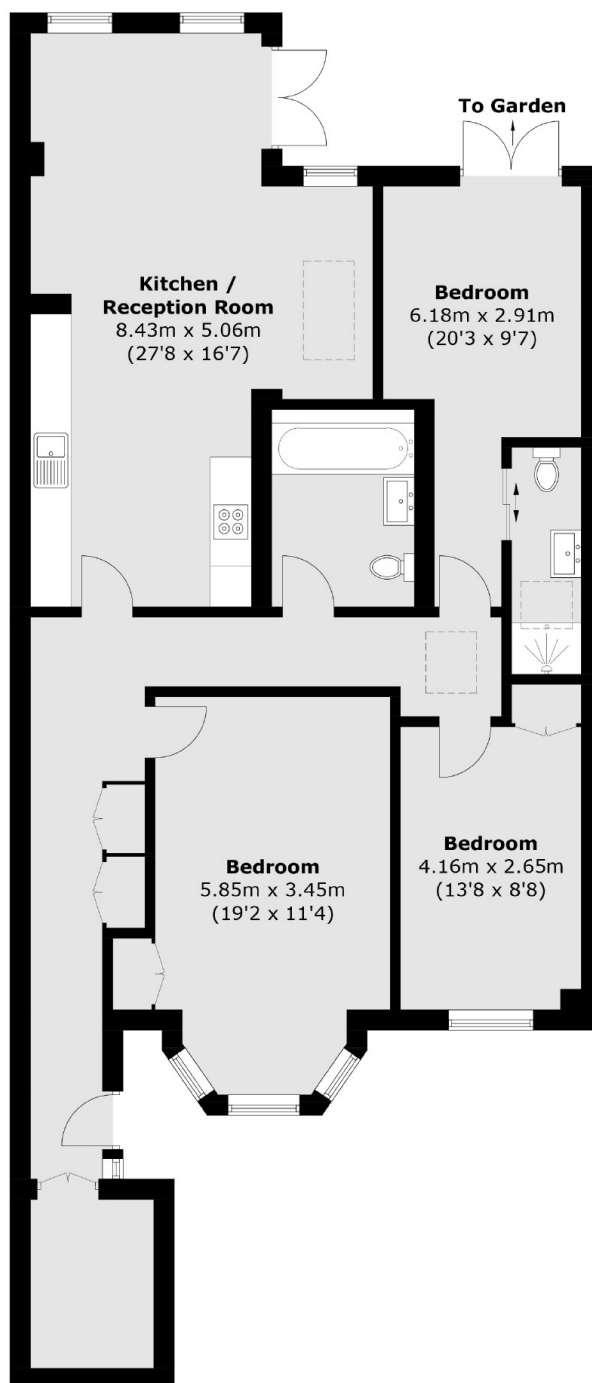
Three bedroom maisonette garden flat set in this Victorian Conversion. This property has been refurbished to a high standard and benefits from an abundance of natural light throughout. The property benefits from a private garden and open plan kitchen.

Marylands Road is a quiet residential road within a short walk to Paddington Recreational Ground as well as local shops, cafés and amenities. The closest tube stations are Warwick Avenue (Bakerloo Line) Maida Vale Tube Station (Bakerloo Line) and Westbourne Park Tube station (Circle & Hammersmith and Cirty Lines)

Features

- Three Bedrooms
- Two Bathrooms
- Private Landscaped Garden
- Recently Refurbished
- Private Entrance
- Prime Location

Marylands Road, Maida Vale, W9



Total area (approx.): 116.0 sq. m (1,248.6 sq. ft)