



Saltram Crescent, W9

£461 Per week

This light and spacious first floor flat has a large double fronted reception, a separate modern kitchen, double bedroom with built-in storage, bathroom suite and a second smaller bedroom / study room.

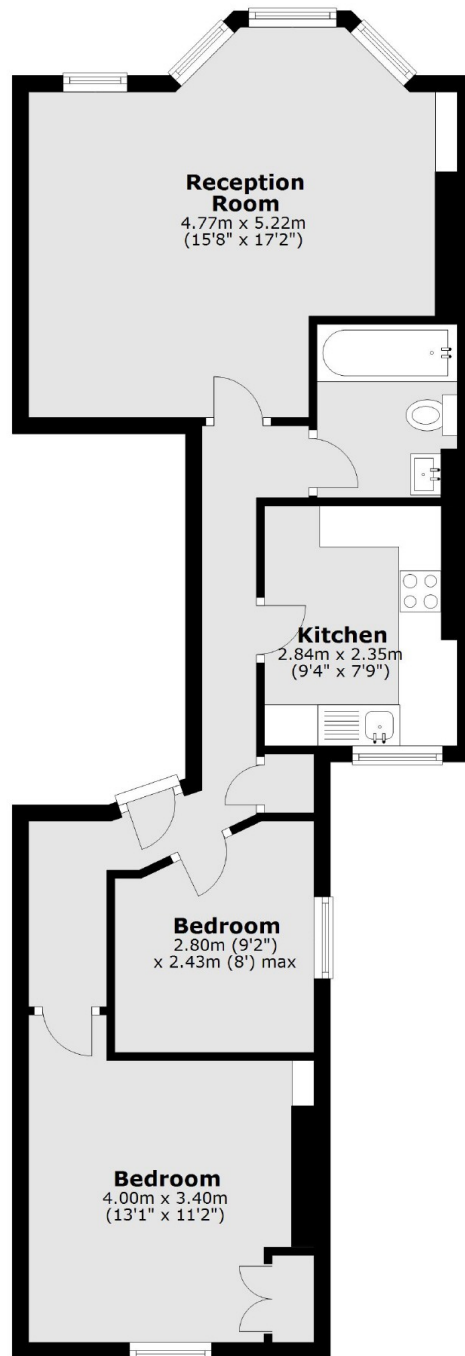
The property is located within easy reach of the cafes, shops and transport links of Queens Park and Maida Vale as well as the Sunday Farmer's Market and M&S food.

Features

- Period Conversion
- First Floor Flat
- Large Double Bedroom
- Guest Bedroom / Study
- Modern Throughout
- Great Location

Saltram Crescent, Maida Vale, W9

First Floor



Total area: approx. 58.6 sq. metres (630.8 sq. feet)