

Hormead Road, W9

£600 Per week

Re-styled and refurbished throughout, this new spacious layout offers two large double bedrooms, two bathrooms, a modern kitchen and a large reception room leading to a private patio garden.

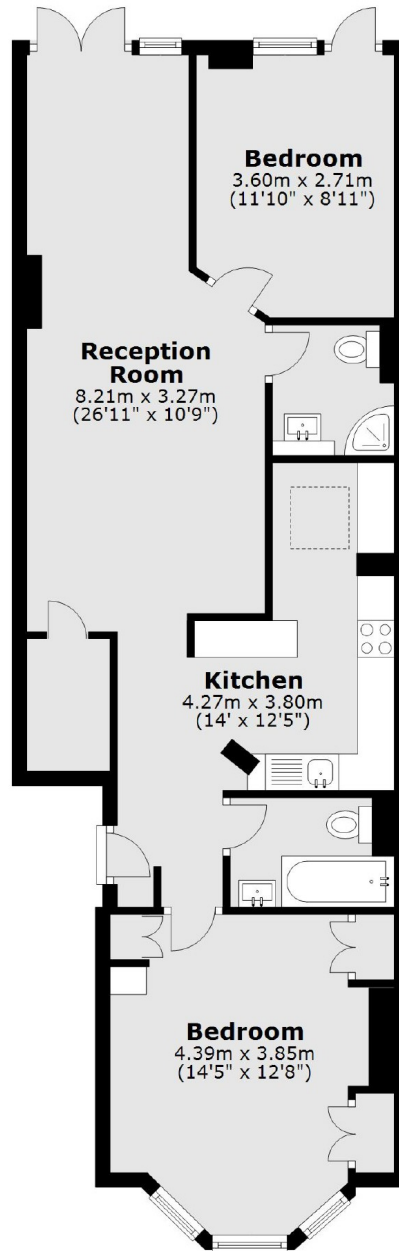
Hormead Road is ideally located for the shops, cafes and restaurants along the Harrow Road and the tube at Westbourne Park whilst being within walking distance of Portobello Market.

Features

Newly Refurbished
Period Conversion
Ground Floor Flat
Two Bedrooms
Two Bathrooms
Private Garden

Hormead Road, Maida Vale, W9

Ground Floor



Total area: approx. 71.8 sq. metres (772.6 sq. feet)