



## Lauderdale Road, W9

£1,500 Per week

A unique split level property located in a red brick mansion block on Lauderdale Road. The property benefits from two receptions, plenty of natural light, large private roof terrace and access to communal gardens.

Located on Lauderdale Road, the property is a short walk from both Maida Vale and Warwick Avenue tube stations whilst also being close to Paddington Recreational Ground.

### Features

- Duplex
- Four Bedrooms
- Two bathroom
- Newly Refurbished
- Open Plan
- Terrace



## Lauderdale Road, W9

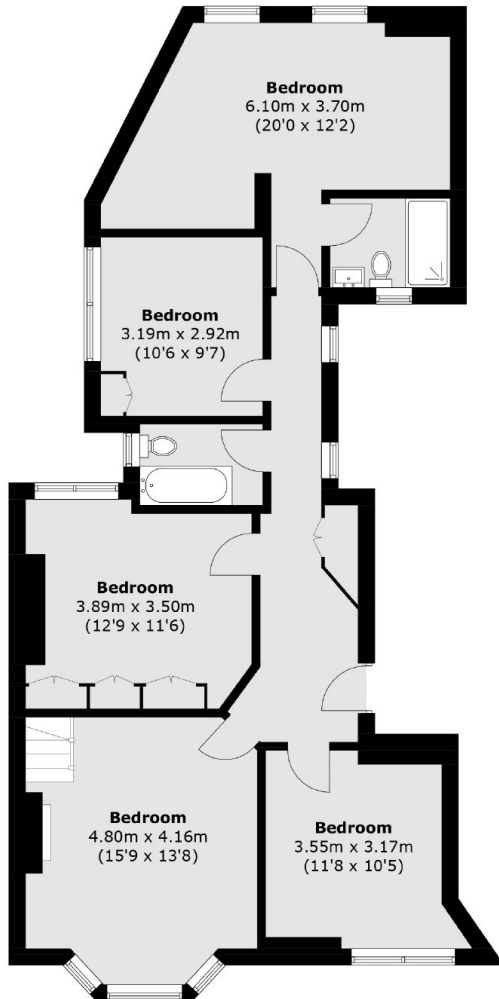
Located on a tree lined street in Maida Vale, this four bedroom property offers plenty of natural light. The generous living space includes a double-height reception room with period features including a fire place and bay window.

The second floor boasts an open-plan contemporary kitchen, dining area and reception room, which opens on to the superb extensive roof terrace with views over the communal gardens.

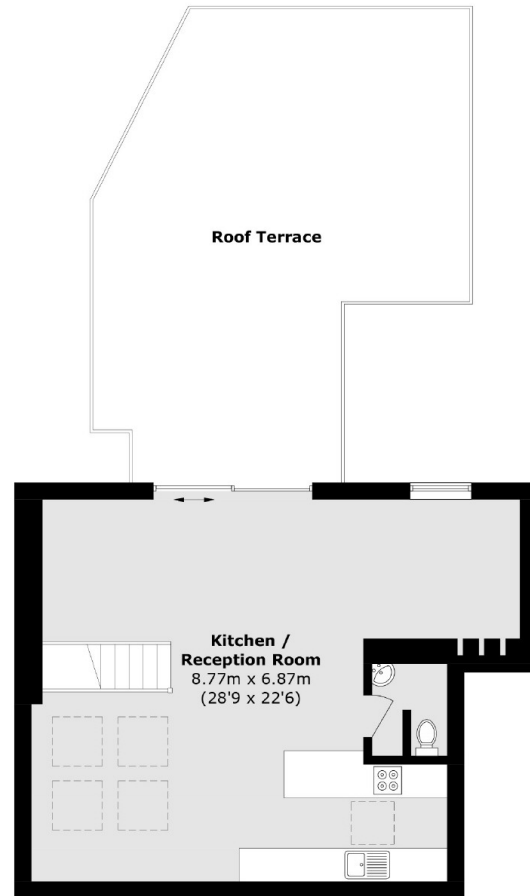
The first floor consists of a spacious principal bedroom with en suite shower room, three further double bedrooms, a well as a separate family bathroom.



# Lauderdale Road, Maida Vale, W9



**Ground Floor**



**First Floor**

Total area (approx.): 149.3 sq. m (1,607.1 sq. ft)  
Roof Terrace: 46.2 sq. m (497.3 sq. ft)