

## Lauderdale Road, W9

£1,846 Per week

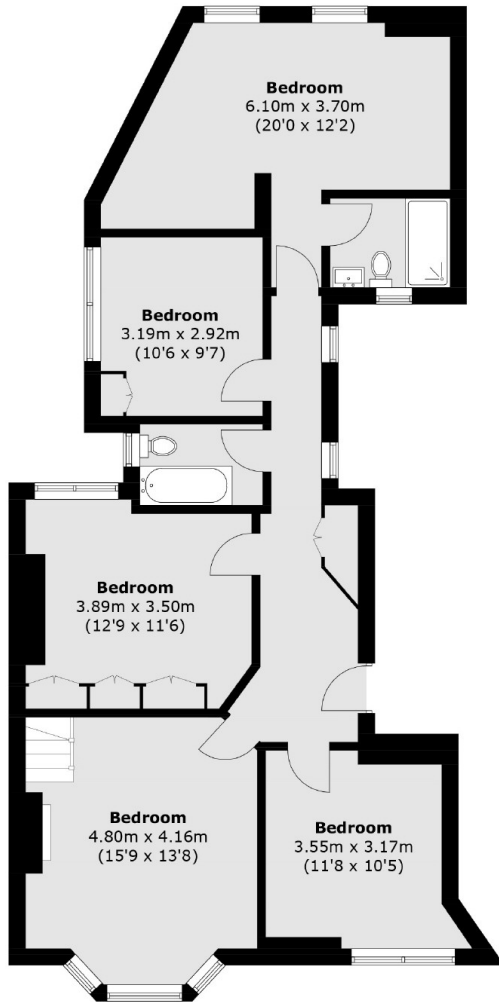
A unique split level property located in a red brick mansion block on Lauderdale Road. The property benefits from two receptions, plenty of natural light, large private roof terrace and access to communal gardens.

Located on Lauderdale Road, the property is a short walk from both Maida Vale and Warwick Avenue tube stations whilst also being close to Paddington Recreational Ground.

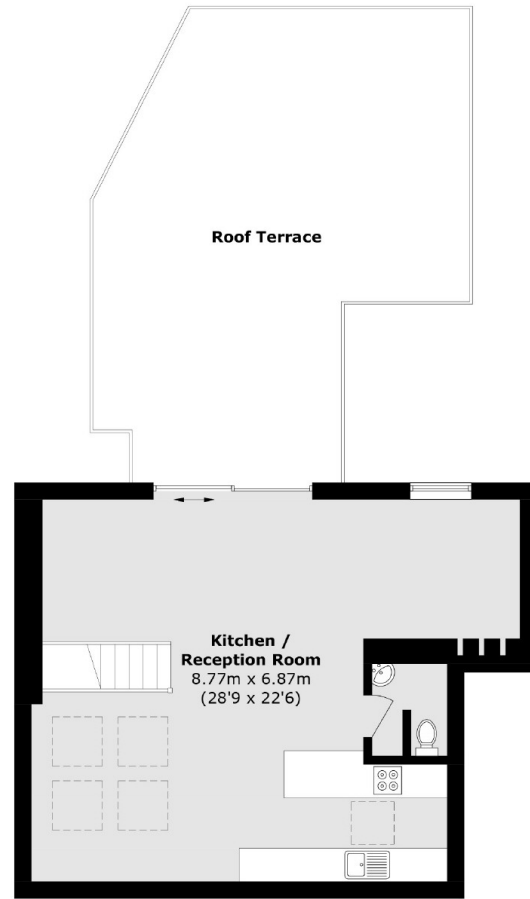
### Features

Duplex  
Four Bedrooms  
Two bathroom  
Newly Refurbished  
Open Plan  
Terrace

# Lauderdale Road, Maida Vale, W9



**Ground Floor**



**First Floor**

Total area (approx.): 149.3 sq. m (1,607.1 sq. ft)  
Roof Terrace: 46.2 sq. m (497.3 sq. ft)