

## Malvern Road, NW6

£565 Per week

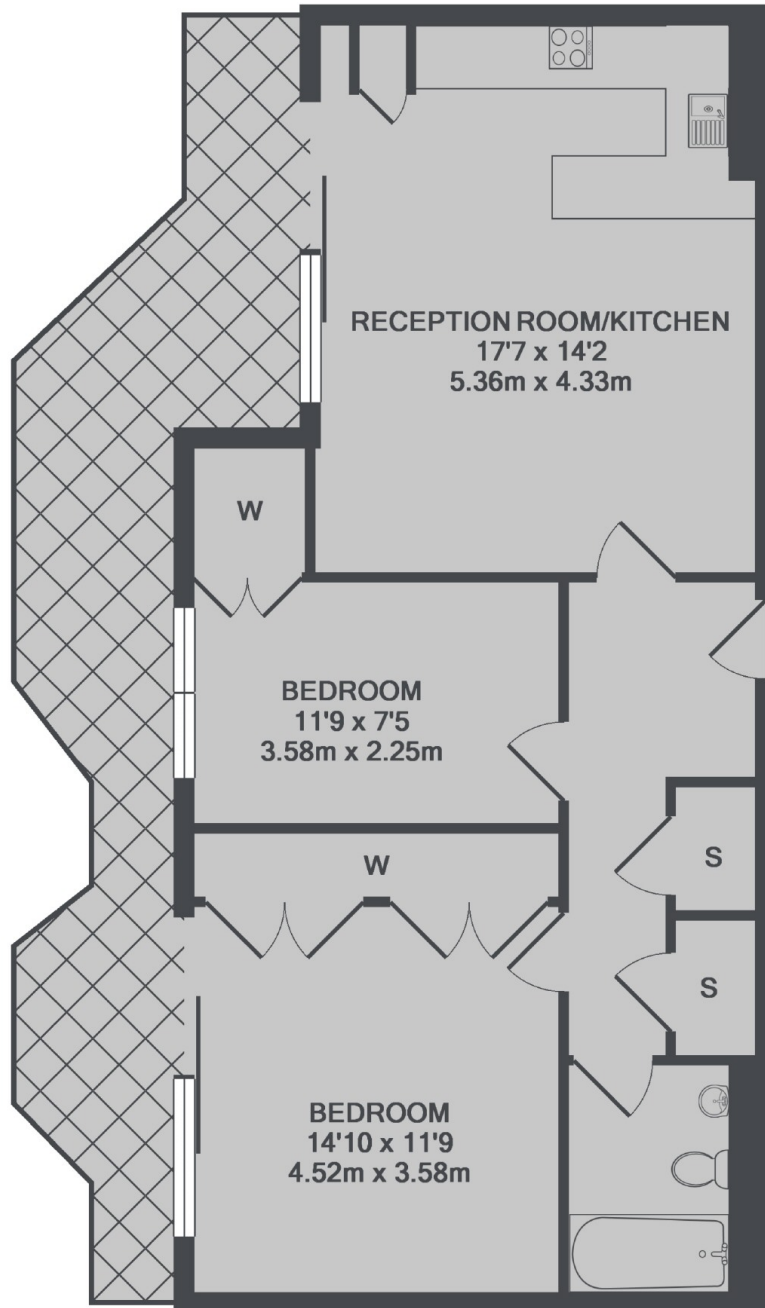
Finished to a high standard throughout including wooden flooring, this spacious two bedroom flat has an open-plan reception, two double bedrooms with built-in storage and a stylish bathroom suite.

Situated at the top end of Malvern Road, you are a short walk from the many shops, cafes and transport links of Queens Park with Maida Vale and St John's Wood in the opposite direction.

### Features

- Top Floor Flat
- Two Double Bedrooms
- New Build Apartment
- Open-Plan Reception
- Wooden Flooring
- Communal Gardens

Malvern Road,  
London, NW6



TOTAL APPROX. FLOOR AREA 678 SQ.FT. (63.0 SQ.M.)

**Dexters**

Maida Vale  
298 Elgin Avenue  
London  
W9 1JS  
Lettings  
020 7266 2021

Energy Rating: Brent- C. We aim to make our particulars both accurate and reliable. However they are not guaranteed; nor do they form part of an offer or contract. If you require clarification on any points then please contact us, especially if you're traveling some distance to view. Please note that appliances and heating systems have not been tested and therefore no warranties can be given as to their good working order.

 **RICS** | Regulated  
Estate Agent  
and Letting Agent

[dexters.co.uk](http://dexters.co.uk)