



Portnall Road, W9

£550,000

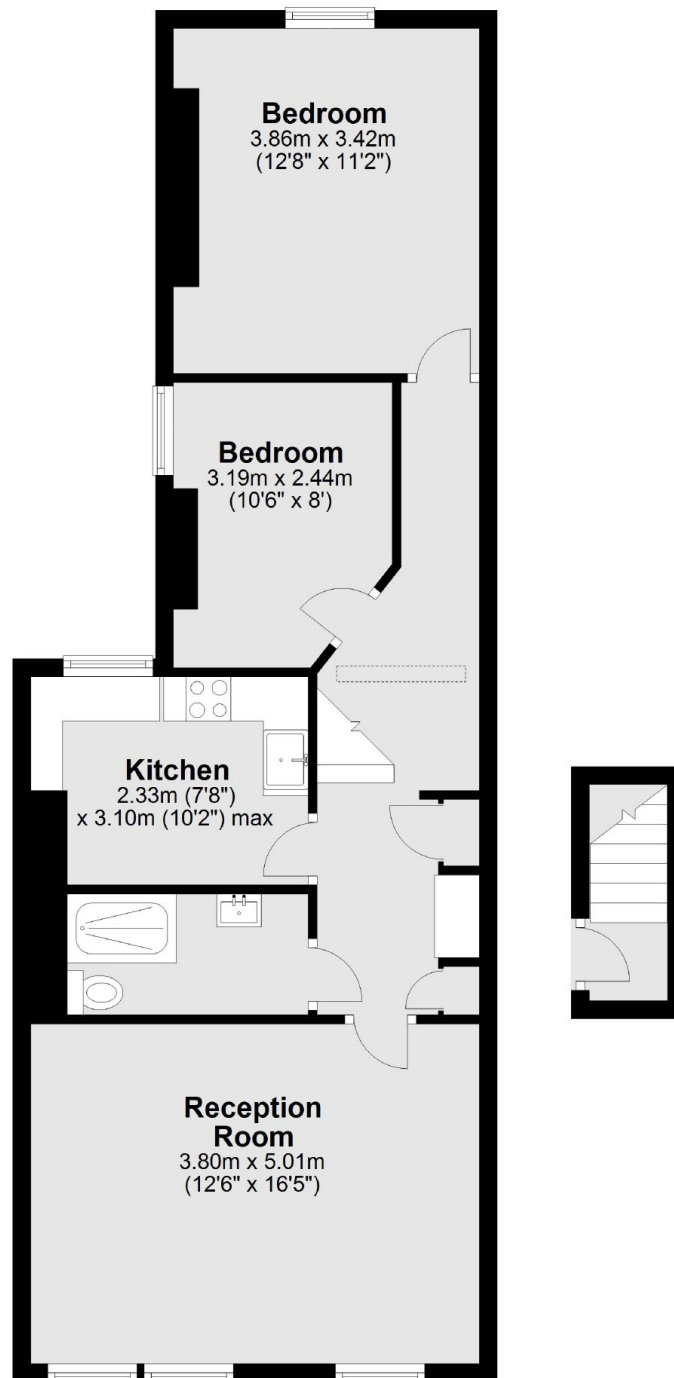
Set on the first floor of a Victorian conversion is this two bedroom flat, renovated throughout. The flat has a spacious reception room, with a large bay window, separate kitchen, a family bathroom and ample storage.

Portnall Road is ideally situated close by to Westbourne Park (Hammersmith & City and Circle lines) and Queens Park (Bakerloo line) as well as the local cafés and shops on Portebello Road and Queens Park.

Features

- Tastefully Renovated
- Separate Kitchen
- Great Transport Links
- Long Leasehold
- High Ceilings & Bay Window
- Residential Road

Portnall Road, Maida Vale, W9



Total area: approx. 65.4 sq. metres (703.7 sq. feet)