



Abinger Mews, W9

£1,150,000

Set in a lovely gated mews, a three storey, four bedroom freehold house with an integrated garage, a private driveway and one of the largest west facing gardens in the mews.

Abinger Mews is within close proximity of multiple transport links into Central London, as well as the numerous amenities, cafés and shops on Salusbury Road & Portobello Road.

Features

- Four Bedrooms
- Gated Mews
- Integrated Garage
- West Facing Garden
- Potential to Extend STPP
- Freehold



Abinger Mews, W9

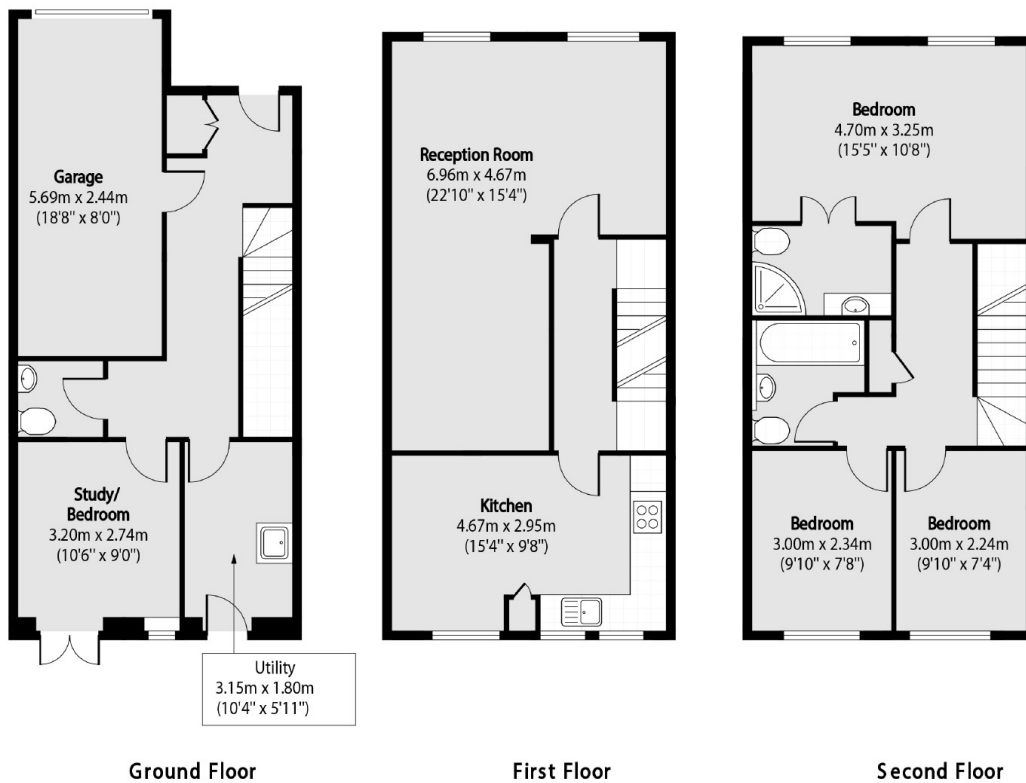
This house is a rare opportunity to acquire a large freehold family home, perfect for a new family to modernise to their own standard and taste.

On the ground floor is an integrated garage, a bedroom/study with access to a private rear garden, a utility room and a guest WC. On the first floor is a large L-shaped reception/dining room and a separate eat-in kitchen/breakfast room, overlooking the garden.

Upstairs, on the second floor, is a large en suite principal bedroom, two further bedrooms and a family bathroom.



Abinger Mews, Maida Vale, W9



Total area (approx): 137.03 sq m (1479 sq. ft)