



Greville Road, NW6

£735,000

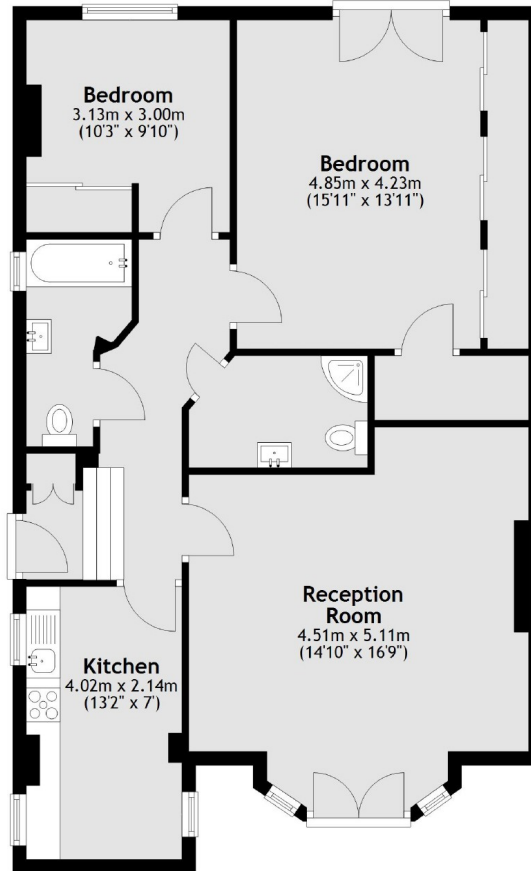
A beautifully presented apartment benefiting from its own private entrance. The property has a lovely reception room with wooden floors, a separate kitchen, two bedrooms and a west facing communal garden.

Greville Road is located on the borders of both St John's Wood and Maida Vale, and within close proximity of the cafés and restaurants of Abbey Road, along with several bus links into the West End.

Features

- Private Entrance
- Large Communal Garden
- Recently Renovated
- Two Bathrooms
- Long Lease Length
- Chain Free

Greville Road, London, NW6



Total area: approx. 84.4 sq. metres (908.8 sq. feet)