



## Shirland Road, W9

£425,000

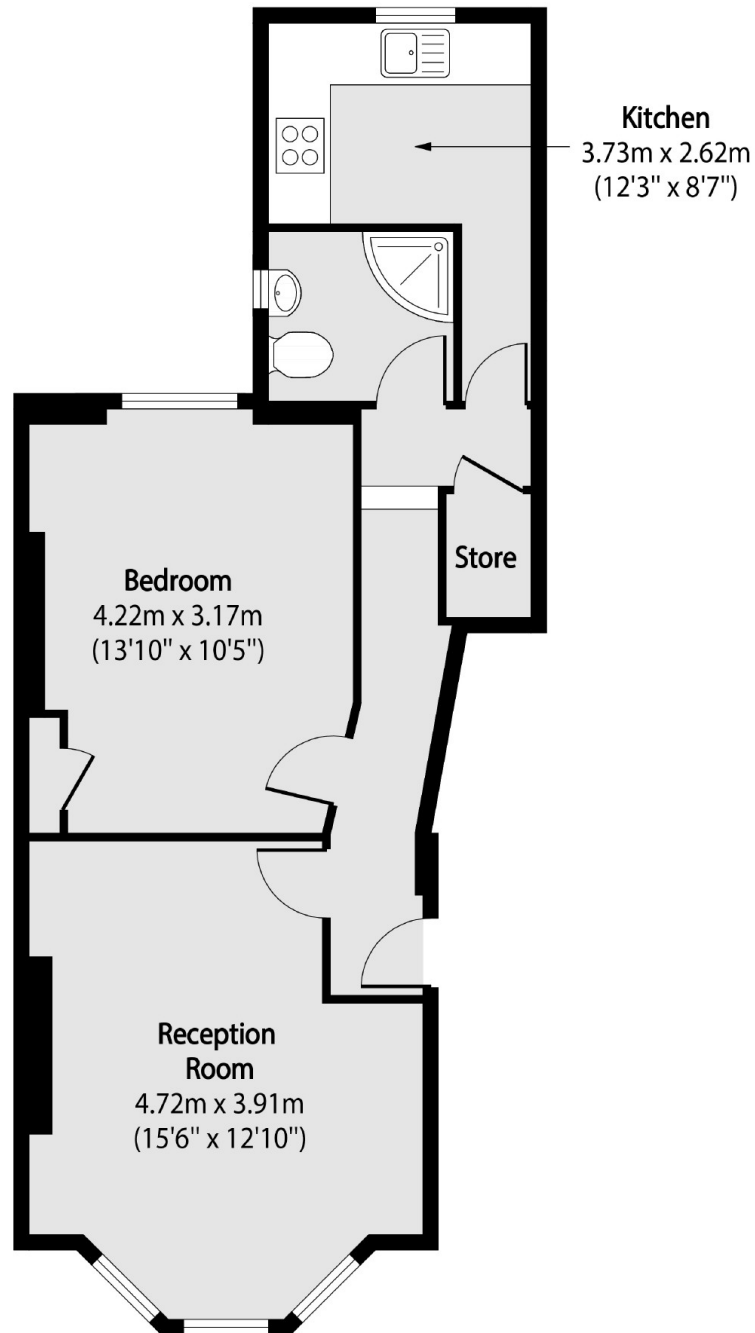
A charming one bedroom raised ground floor flat with a modern kitchen, a reception room with wooden floors and a characterful bay window and a contemporary shower room.

Shirland Road is ideally located for both Maida Vale and Warwick Avenue tube stations, the open space of Paddington Recreational Ground, and a number of local independent shops.

### Features

- Period Conversion
- Raised Ground Floor
- One Double Bedroom
- Spacious Lounge
- Separate Kitchen

# Shirland Road, Maida Vale, W9



Total area (approx): 45.52 sq m (490 sq. ft)