



Chippenham Road, W9

£965,000

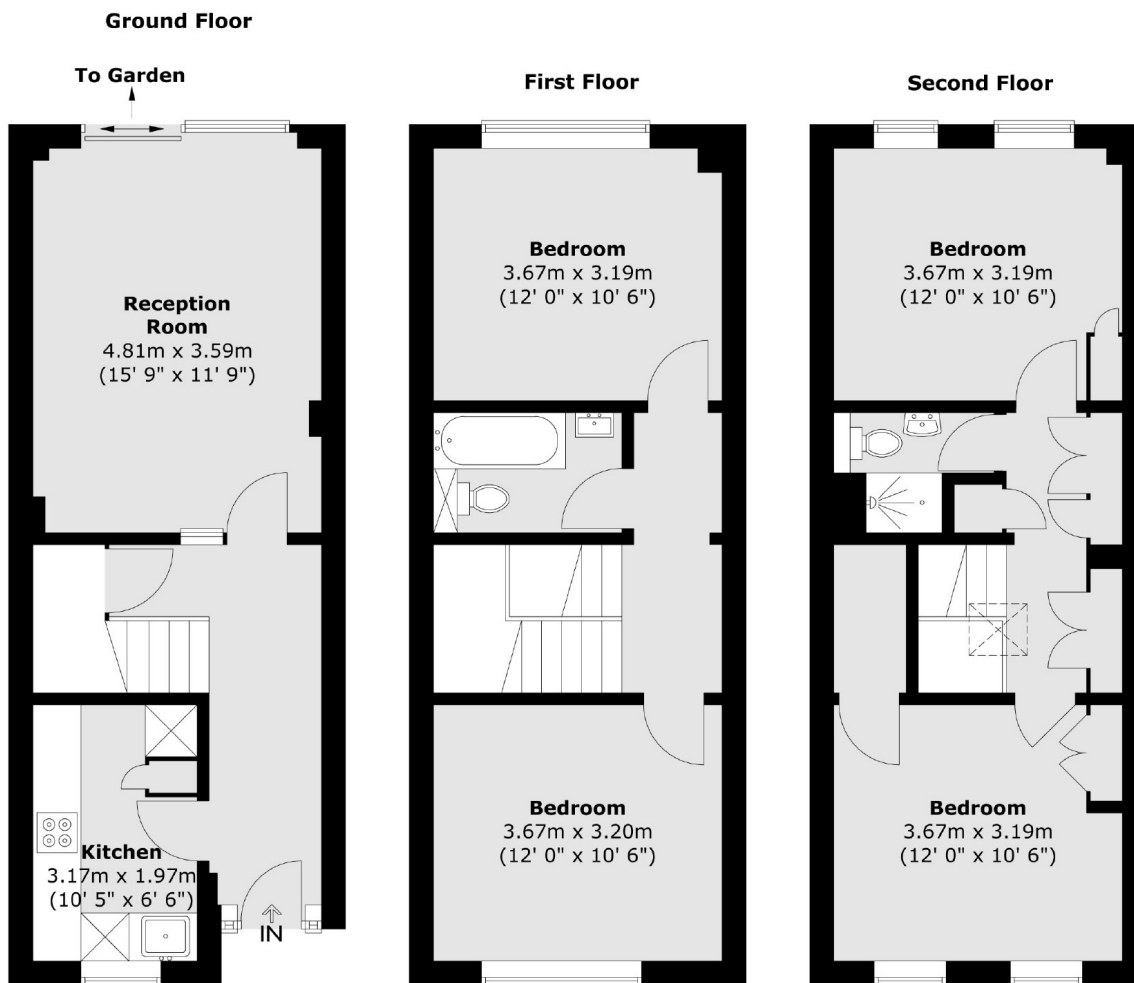
This fantastic four double bedroom house offers a separate sizeable kitchen, large reception/dining area and two family bathrooms. This freehold town house is flooded with natural light and has direct access to a private west facing garden. This is a perfect family home or ideal rental investment.

Chippenham Road is less than half a mile from multiple transport links to central London. It is walking distance of all the local amenities of Maida Vale and Westbourne Grove, along with the sporting facilities of Paddington Recreational Ground.

Features

- Freehold
- Four Double Bedrooms
- HMO Compliant
- Private West Facing Garden
- Investment Opportunity 6% Yield
- Great Transport Links

Chippenham Road, Maida Vale, W9



Total area (approx.) : 109.2 sq. m (1175 sq. ft)