



St. Peters Place, W9

£1,107 Per week


Arranged over approximately 1,543sqft, is this south facing four bedroom, two bathroom freehold house in excellent condition, which is located in a private gated mews.

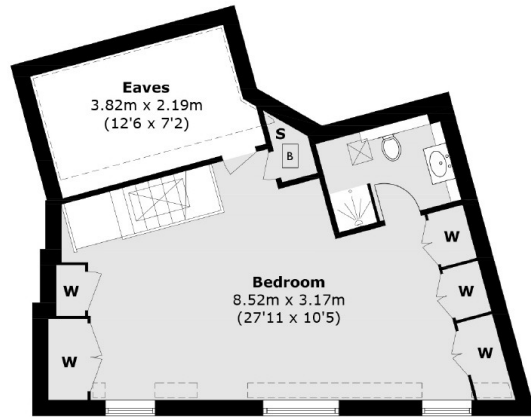
The mews house is ideally located being only a short walking distance to both Maida Vale and Warwick Avenue Underground Station (Bakerloo Line - less than half a mile and half a mile). Furthermore the shops and restaurants on Formosa Street and Clifton Road are just around the corner.

Features

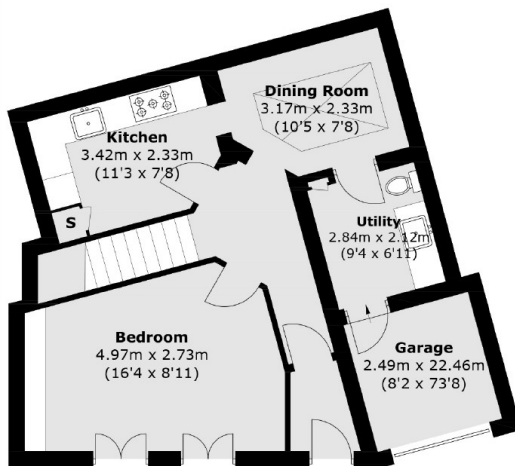
- Private Gated Mews
- Four Bedroom
- Utility Room
- Two bathrooms
- Juliette Balcony
- Garage

St. Peters Place, Maida Vale, W9

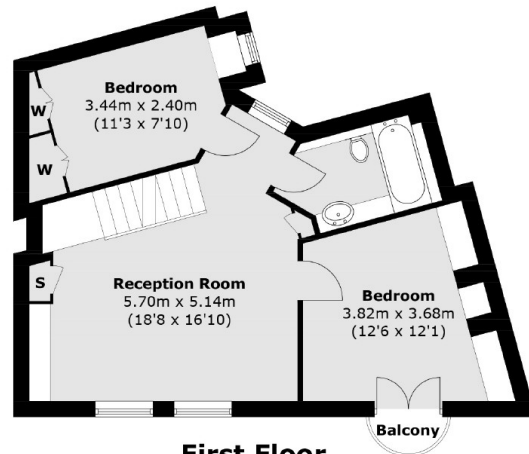
 = Reduced headroom below 1.5m / 5'0



Second Floor



Ground Floor



First Floor

Total area (approx.): 143.4 sq. m (1,543.4 sq. ft) (Excluding Eaves)
(Including Garage)
Balcony: 0.9 sq. m (10 sq. ft)