



## Randolph Avenue, W9

£800,000

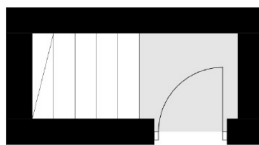
In need of a full renovation, this top floor flat is set in a Victorian conversion, offering two double bedrooms, a bathroom and a separate kitchen. Great potential for the new homeowner to put their own stamp to the property, available chain-free and with a demised loft space.

Set in the heart of Little Venice Randolph Avenue is only moments away from the Regent's Canal and the fantastic local amenities on Clifton Road. Nearby transport is provided by the way of Warwick Avenue and Maida Vale Underground stations (Bakerloo Line) and Paddington station.

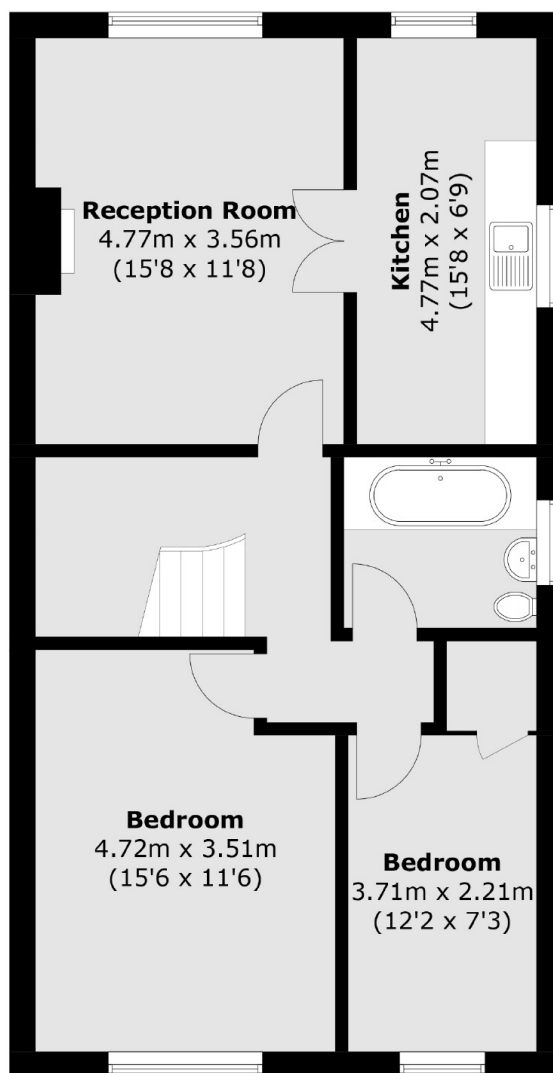
### Features

- Top Floor Flat
- Complete Refurbishment Project
- Demised Loft Space
- Prime Location
- Chain Free
- Great Transport Links

# Randolph Avenue, Maida Vale, W9



## First Floor



## Second Floor

Total area (approx.): 71.8 sq. m (772.8 sq. ft)