



## Sutherland Avenue, W9

£700,000

A stunning top floor two double bedroom flat set over three floors of a elegant Victorian terrace house. This property has a large reception/dining room with a feature fire place, a separate kitchen, additional study room and a family bathroom.

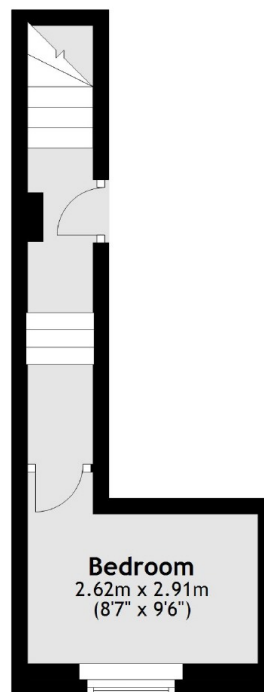
Sutherland Avenue is a tree line road in the heart of Maida Vale within half a mile of multiple transport links, Warwick Avenue, Clifton Gardens and Formosa Street.

### Features

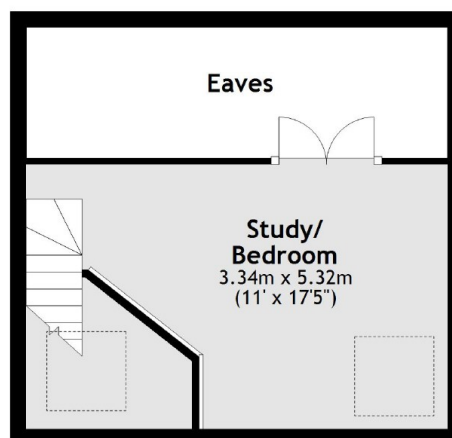
- Two Bedrooms
- Double Height Ceiling
- Separate Reception/Kitchen
- Study Room/Guest Bedroom
- Victorian Features
- Share Of Freehold

# Sutherland Avenue, Maida Vale, W9

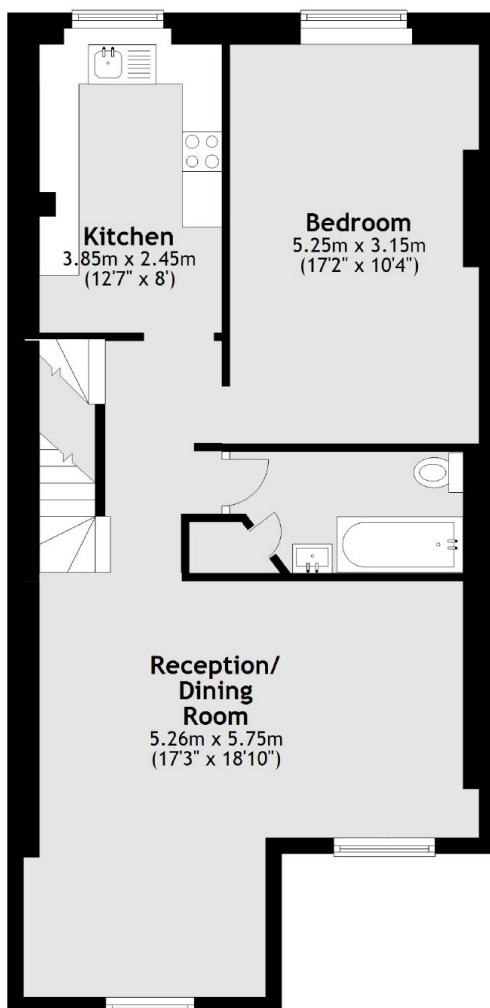
## Second Floor



## Fourth Floor



## Third Floor



Total area: approx. 93.9 sq. metres (1010.9 sq. feet)