



Ashmore Road, W9

£500,000

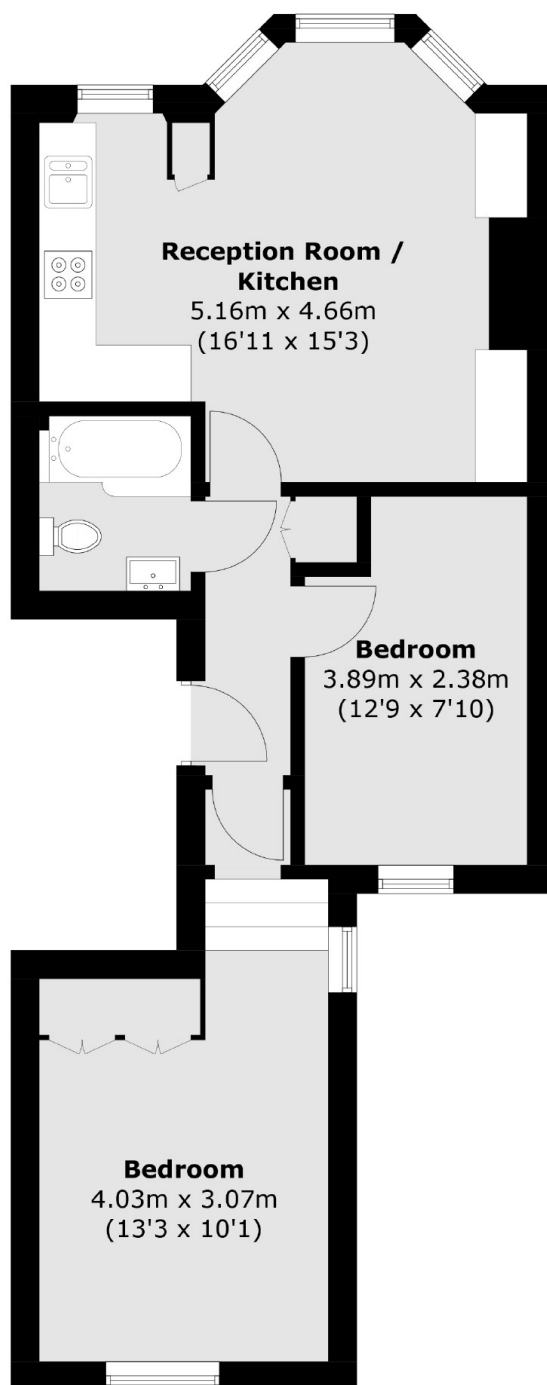
A two double bedroom, first floor flat set within this Victorian conversion. The property has ample storage throughout, an open-plan reception with a large bay window. The property will be sold with a share of the freehold and no onward chain.

Ashmore Road is great for access to Queen's Park or Westbourne Park with many transport links to Central London and within a mile of Little Venice, Portobello and Paddington Rec.

Features

- Period Conversion
- Share Of Freehold
- First Floor Flat
- Open-Plan Kitchen
- Chain Free
- Great Transport Links

Ashmore Road, Maida Vale, W9



Total area (approx.): 51.4 sq. m (553.3 sq. ft)