

Sutherland Avenue, W9

£875,000

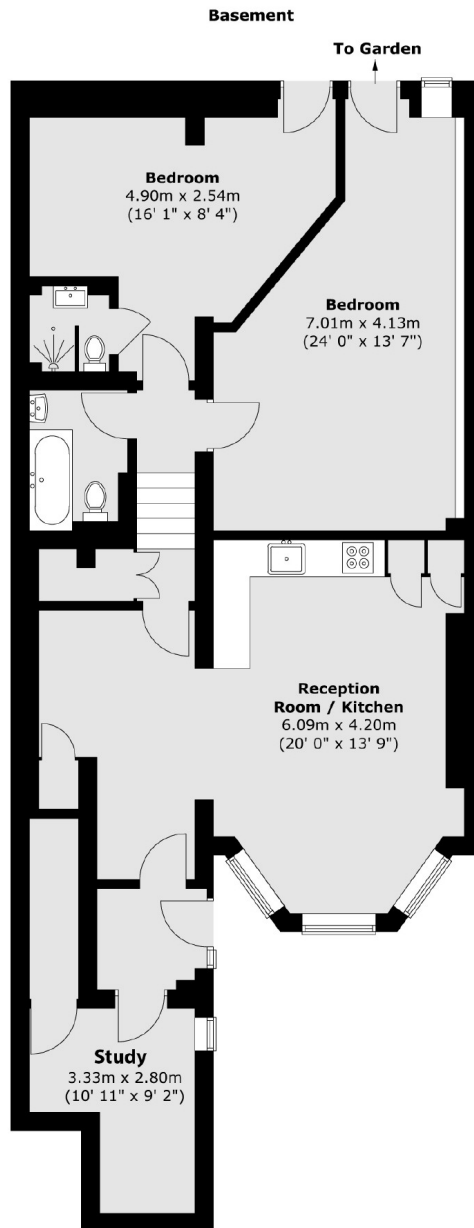
A two bedroom, two bathroom lower ground garden flat situated in a Victorian conversion. This property has an open plan kitchen, additional study room and has been recently renovated. The garden flat offers a delightful blend of period features and a modern finish. It has over 1100 SqFt (102 Sq.m) of living space with additional benefit's of share of the freehold.

Sutherland Avenue is a desirable tree-lined street moments from the cafés, restaurants and boutique shops on Clifton Road and Lauderdale Parade. Warwick Avenue and Maida Vale underground stations are both a short walk away, as is Paddington Recreation Ground.

Features

- Share Of Freehold
- Communal Garden
- Two Bedrooms & Study Room
- Private Bike Storage
- Chain Free
- Prime Location

Sutherland Avenue,
Maida Vale, W9



Total area (approx.) : 102.5 sq. m (1103 sq. ft)