



Blomfield Road, W9

£750,000

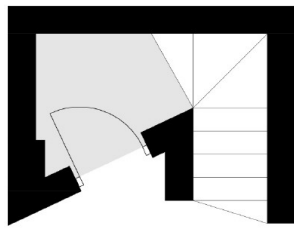
A charming and unmodernised two bedroom situated in a well-maintained stucco fronted period conversion on the top floor. The flat offers bright and spacious living accommodation with a separate kitchen and a family bathroom.

Blomfield Road is enviably located due to its close proximity to local amenities such as Formosa Street, Maida Vale and Sheldon Square, as well as convenient transport links (Warwick Avenue and Paddington Station).

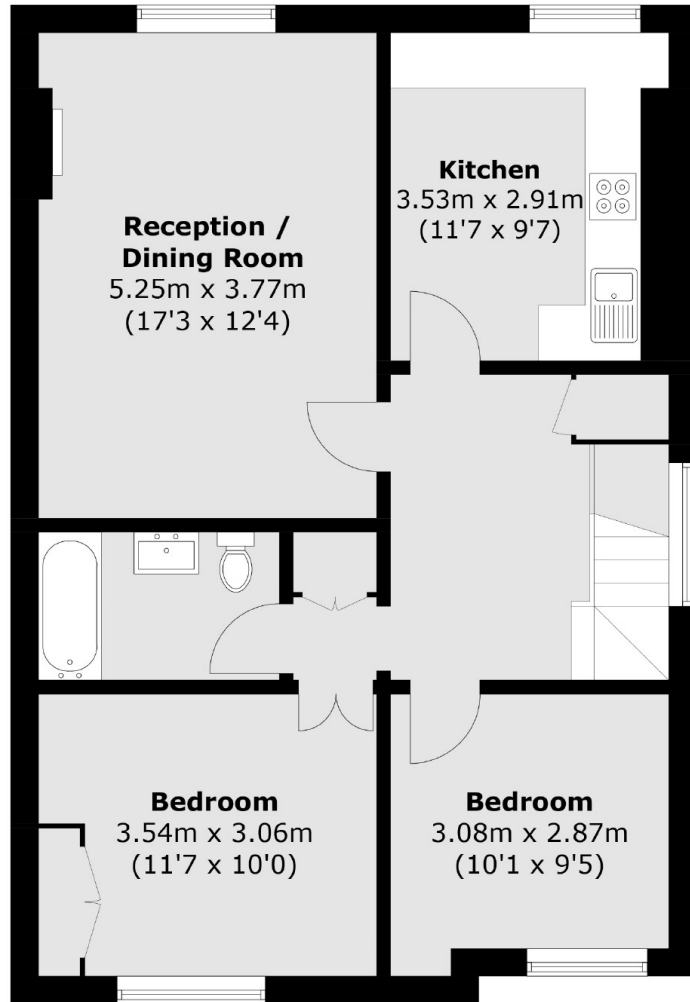
Features

- White Stucco Fronted
- Top Floor Flat
- Prime Little Venice
- Great Transport Links
- Semi-Detached Conversion
- Chain Free

Blomfield Road, Maida Vale, W9



First Floor



Second Floor

Total area (approx.): 72.3 sq. m (778.2 sq. ft)