



## Macroom Road, W9

£600,000

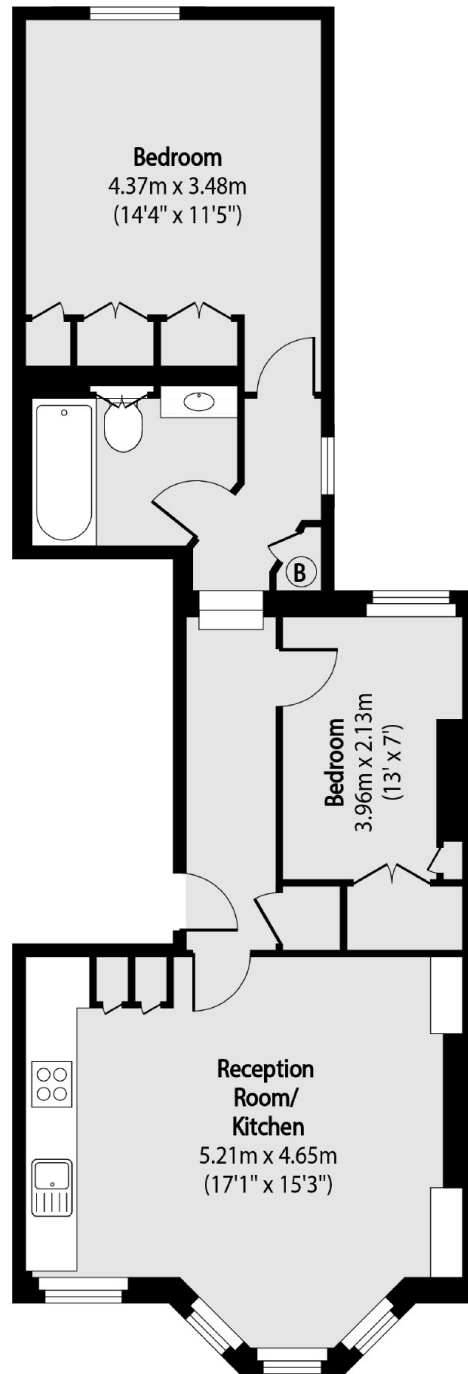
Set on the first floor of a Victorian conversion is this two double bedroom flat, renovated throughout. The flat has a spacious open plan living area with a large bay window, a family bathroom and ample storage.

Macroom Road is a residential street nestled between Saltram Crescent and Fernhead Road, and within easy reach of the shops and cafés of Maida Vale, the open spaces of Queens Park and Paddington Recreation Ground.

### Features

- Great Condition
- High Ceilings & Bay Window
- Share of Freehold
- Victorian Conversion
- Residential Road
- Great Transport Links

# Macroom Road, Maida Vale, W9



Total area (approx): 57.32 sq m (6179 sq. ft)