



Ashmore Road, W9

£700,000

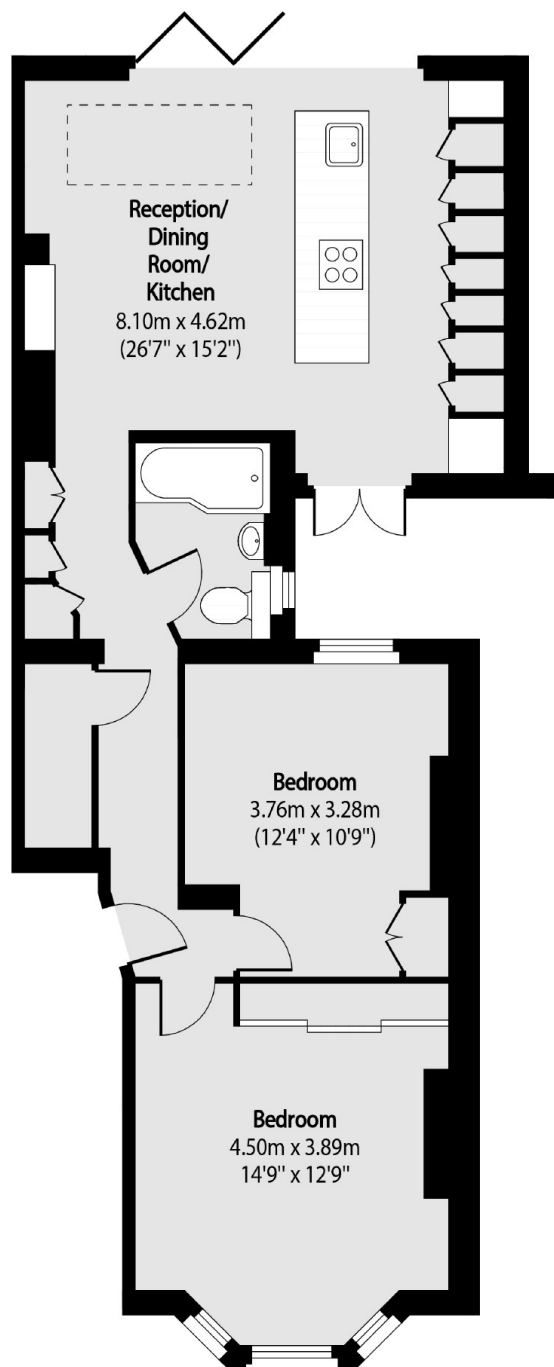
A recently renovated ground floor garden flat, with two double bedrooms and a family bathroom. The flat has been refurbished throughout to a great standard. It offers an open plan kitchen and leads onto a private southerly facing garden.

Ashmore Road is a tree lined street located just a couple of minutes' walk from Queen's Park station (Bakerloo Line and Overground) Westbourne Park, Little Venice, Portobello and Paddington Rec with the local cafés, restaurants and shops in the high street.

Features

- Two Double Bedrooms
- Ground Floor Flat
- Recently Renovated
- South/West Facing Garden
- Open Plan Kitchen
- Great Transport Links

Ashmore Road, Maida Vale, W9



Total area (approx): 72.09 sq m (776 sq. ft)