



## Saltram Crescent, W9

£525,000

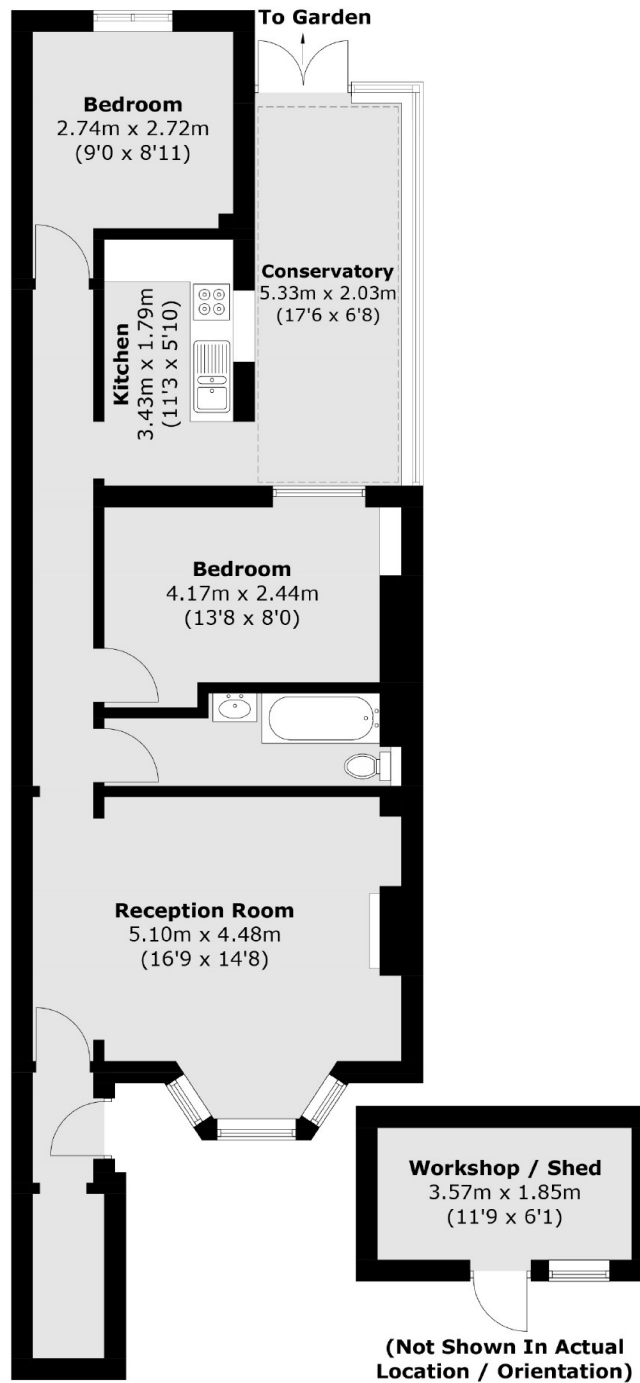
Set in this period Victorian conversion is this two bedroom garden flat. The spacious flat includes a reception room, family bathroom, separate kitchen and a conservatory on the side which leads out to the secluded rear garden.

Saltram crescent is a tree lined road with choice of entertainment of Maida Vale, Queens Park and Notting Hill are all within easy reach. Local transport links include Queen's Park Underground Station (Bakerloo Line and overground) and Westbourne Park Underground Station (Hammersmith and City Lines), as well as Maida Vale Underground Station (Bakerloo Line).

### Features

- Private Garden
- Ample Storage
- Long Leasehold
- Private Entrance
- Great Transport Links
- Conservatory Extension

# Saltram Crescent, Maida Vale, W9



Total area (approx.): 77.4 sq. m (833.1 sq. ft)  
Workshop / Shed: 6.7 sq. m (72.1 sq. ft)