

## Malvern Road, NW6

£665,000

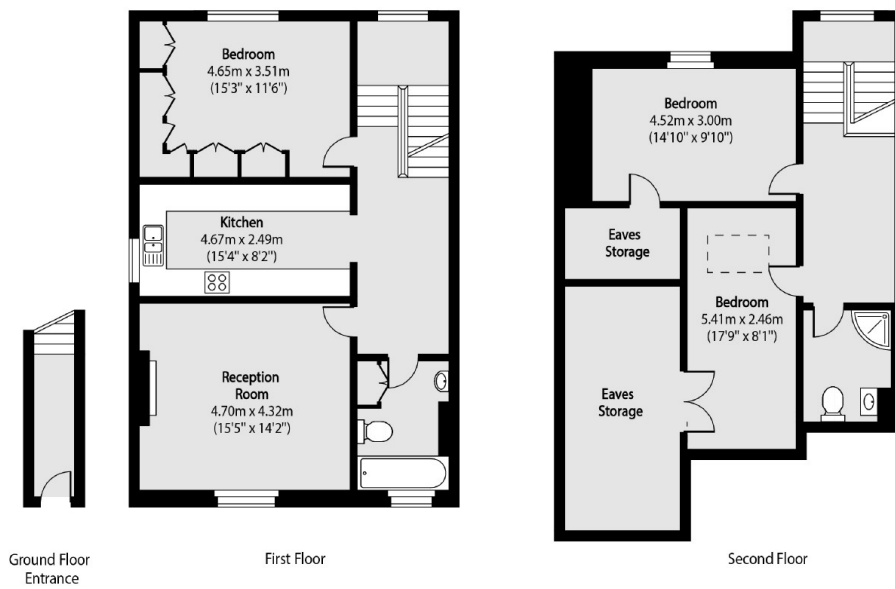
A well presented three bedroom flat in a Victorian Conversion. This split-level flat is situated on the first and second floor. It benefits from a large kitchen diner, a separate reception room, one double bedroom and a family bathroom. On the top floor there are two spacious principal bedrooms with built in wardrobes and a shower room.

The flat sits opposite Kilburn Park, while the larger green spaces of both Queens Park and Paddington Recreation Ground are only a short walk away. The tranquil tow paths of the Grand Union Canal are nearby along with Paddington station which has Crossrail, National Rail and Heathrow express connections.

### Features

- Three Bedrooms
- Period Conversion
- Communal Garden
- Leasehold
- Split Level
- Great Transport Links

# Malvern Road, London, NW6



Total area (approx): 123.00 sq m (1324 sq. ft)