



## Kilburn Park Road, NW6

### £850,000

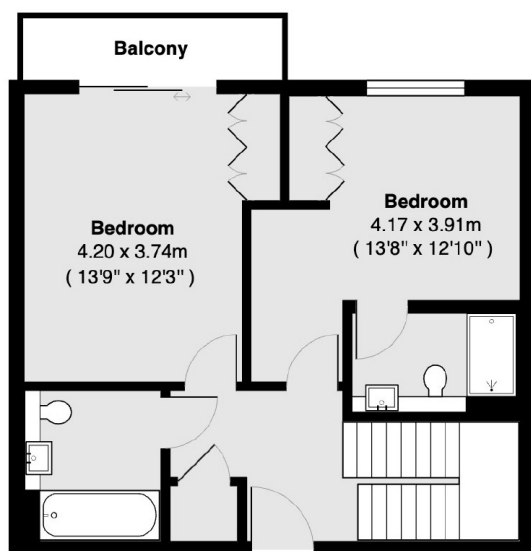
A remarkable three double bedroom split-level flat, situated on the third and fourth floor. Boasting elegant design with Villeroy & Boch bathrooms and a integrated Neff kitchen, this residence offers the perfect blend of comfort, style and convenience.

Argo House is Ideally located next to Paddington Recreation ground, offering both the tranquillity of Maida Vale and Little Venice, and the vibrant energy of Kilburn Park and Queens Park (Bakerloo line and overground at Queen's Park).

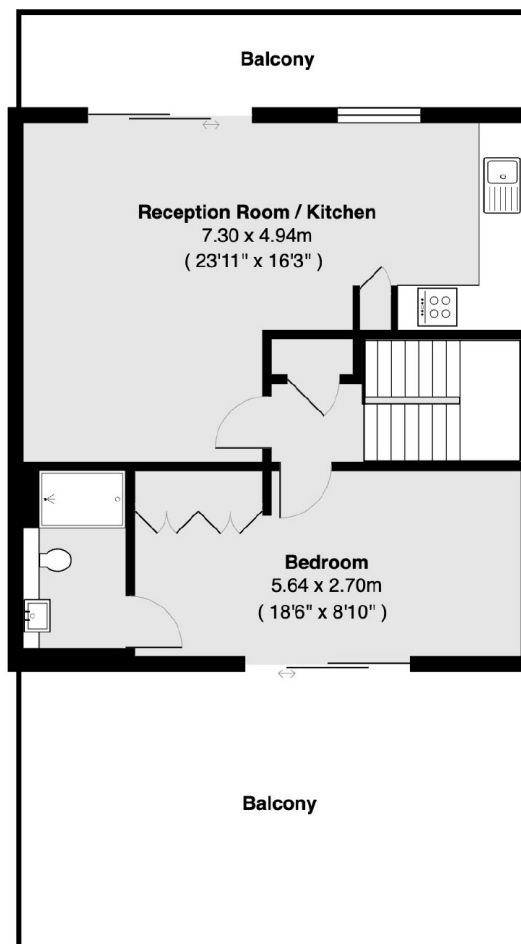
### Features

- Split-Level
- Two En Suites & One Bathroom
- Three Private Balconies
- Villeroy & Boch Specification
- Day Porter & Lift Access
- Private Underground Parking

# Kilburn Park Road, London, NW6



3rd Floor



4th Floor

**Total area 103.5 sq m ( approx ) ( 1114 sq ft approx )**

**Balcony total area 42.6 sq m ( approx ) ( 458 sq ft approx )**