



Randolph Avenue, W9

£1,400,000

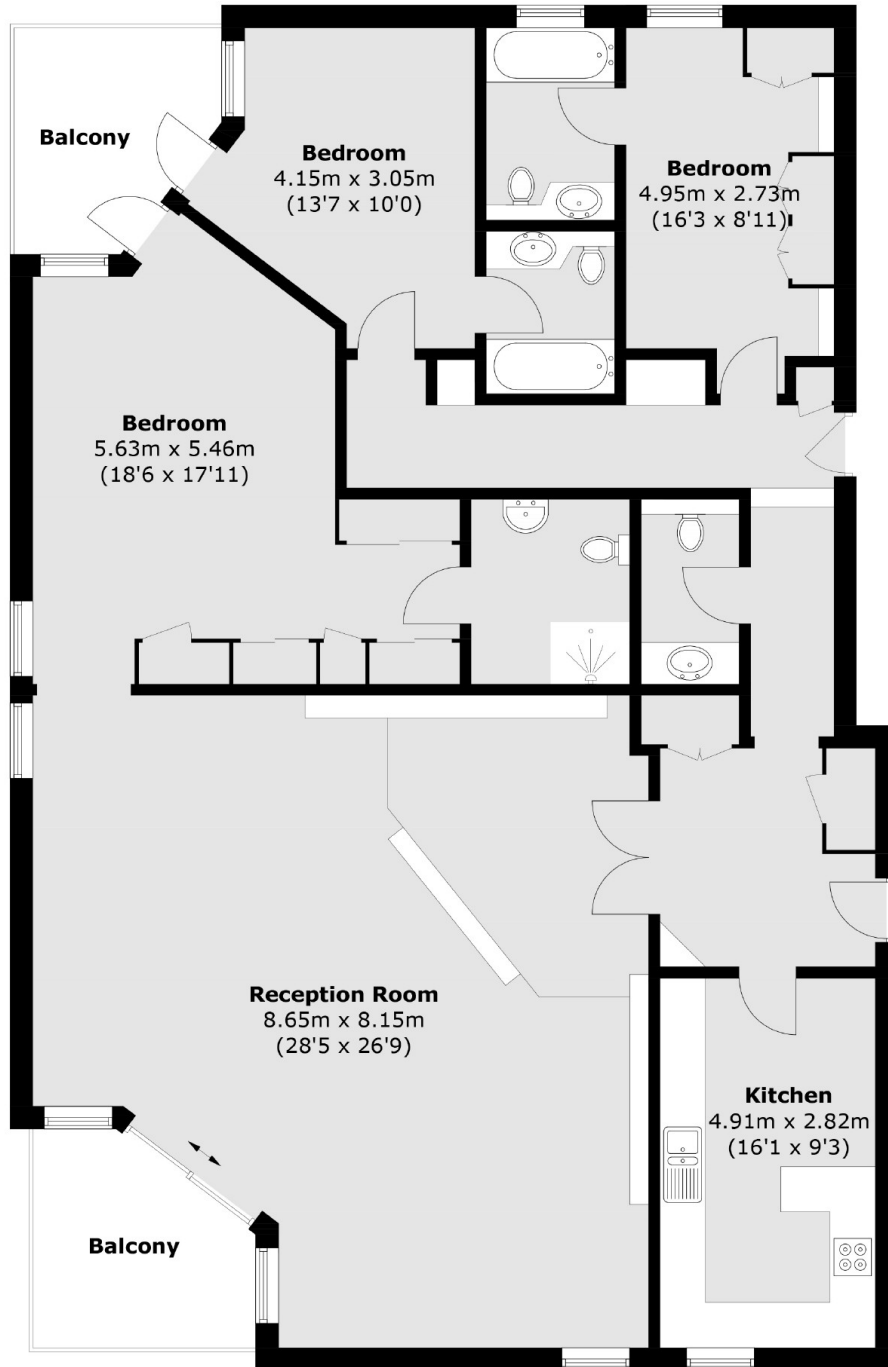
In need of modernisation is this unique opportunity of a penthouse arranged over 1,870 sq ft. This three bedroom apartment benefits from two spacious terraces with impressive views, and wonderful natural light throughout.

Melbourne Court is in the heart of Little Venice, providing residents with a modern communal areas, porterage services, high security and CCTV. Only moments away from the Regent's Canal and the fantastic local amenities on Clifton Road.

Features

- Three Double Bedrooms
- Two Private Balconies
- Over 1870 Sq Ft
- Lift & Porterage
- Prime Location
- Chain Free

Randolph Avenue, Maida Vale, W9



Total area (approx.): 174.1 sq. m (1874.0 sq. ft)
Balcony area : 14.3 sq. m (153.9 sq. ft)