



Loggans Road

Loggans

Hayle

TR27 5BH

Offers In The Region Of  
£80,000

- POPULAR COASTAL HOLIDAY PARK IN HAYLE
- 3 BEDROOMS WITH MASTER EN-SUITE
- SHORT WALK TO THE BEACH WITH DISTANT SEA VIEWS
- HIGH SPECIFICATION
- USE OF SITE FACILITIES
- PRIVATE DECKED BALCONY



 **Millerson**  
millerson.com

## ST IVES BAY HOLIDAY PARK

St Ives Bay Holiday Park, is located on the north coast of Cornwall and has everything you need for a delightful trip to the wonderful and ever popular Cornwall. With private access to a 3-mile long, sandy beach, where you can spend the day sun-bathing, swimming and – if you have little ones – building plenty of sandcastles, our St Ives Bay is the perfect beach-side getaway.

If there's a more perfect setting in the south-west than St Ives Bay Beach Resort in Hayle, Cornwall, we've yet to find it. Whether you're all piling in for a family holiday, or you want to enjoy romantic sunsets as a couple, this is the place for making memories. Here's why: First up, the setting. In undisturbed countryside with private access to three miles of sandy beach and spectacular sea views across St Ives Bay, it's one of the finest holiday spots in Cornwall for a caravan holiday park.

Next, your accommodation. Are you a laid-back camper or a fan of life's little luxuries?

Whichever you are, there's something to suit your style at our St Ives holiday village, from camping and touring pitches to chalets, caravans and fab little camping pods.

Finally, what about the action? Well, if kicking back and enjoying the views is not quite enough for you (and, let's face it, the kids will want more), how about crazy golf, tennis or the amusement arcades. You can burn off more energy at the surf school and the indoor swimming pool, and because we all know that children never tire, there's a play park too.

With all this going on, make sure you leave time to unwind for a drink at one of the two onsite bars and enjoy local cuisine, freshly prepared, at the Bay Bistro.

At our St Ives Bay holiday park your dream Cornwall lodge and caravan holiday becomes a reality, and you will want to return time and time again.

## OPEN PLAN KITCHEN, LOUNGE DINER

**KITCHEN:** Sink unit with adjoining work surfaces, range of modern base and eye level units with integrated oven and microwave, radiator, fitted dining table with seating. **LOUNGE:** Large fitted sofa, television, shelving and storage. Double glazed windows on three sides with double doors to the front leading to the wraparound decked seating area with distant sea views.

## INNER HALL

Storage cupboard, access to bedrooms and shower room.

## TWIN BEDROOM

Twin beds, radiator, built in wardrobe, double glazed window to the side.

## SHOWER ROOM

A modern suite with fitted shower, sink unit with cupboards under, low level w.c, heated towel rail.

## TWIN BEDROOM

Built in wardrobe, radiator, double glazed window to the side, twin beds.

## EN SUITE DOUBLE BEDROOM

Double bed, radiator, double glazed window to the rear, door to en-suite.

## EN-SUITE

Low level w.c, wash hand basin, double glazed window to the side.

## OUTSIDE

There is a private decked balcony to the side and rear of the property enjoying distant sea and coastal views.

## SITE FEES

Standard - £5,495

Premium - £7,495

Premium+ - £8,995



3

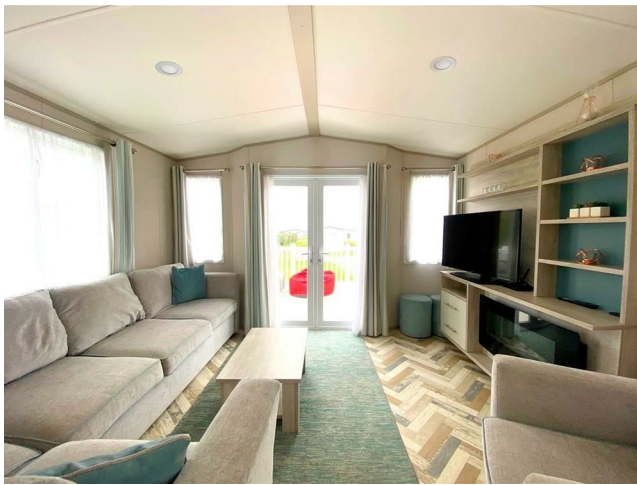


2



1







## Contact Us

Millerson Estate Agents  
50 Fore Street  
Hayle  
Cornwall  
TR27 4DY  
E: [hayle@millerson.com](mailto:hayle@millerson.com)  
T: 01736 754115  
[www.millerson.com](http://www.millerson.com)

## Valuation Request

