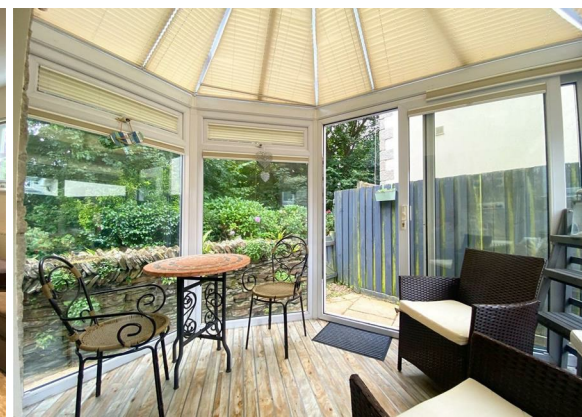




Kittiwake Close
Lelant
TR27 6GL

£385,000

- BEAUTIFULLY PRESENTED 2-3 BED HOME
- LINK DETACHED
- SPACIOUS ACCOMMODATION ARRANGED OVER 3 FLOORS
- GARAGE AND PARKING
- LOW MAINTENANCE GARDEN
- HIGHLY SOUGHT AFTER LOCATION
- NO ONWARD CHAIN



 **Millerson**
millerson.com

Tenure - Freehold

Council Tax Band - C

Floor Area - 1044.10 sq ft



3



3

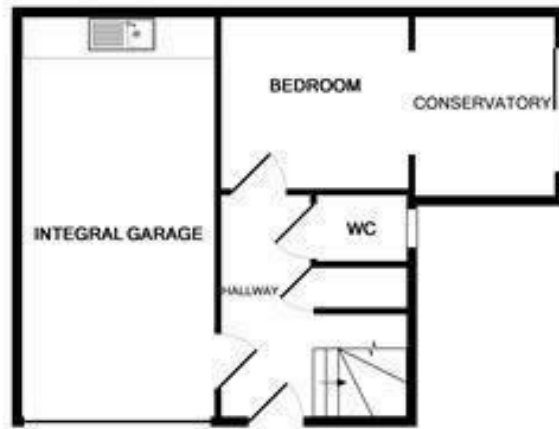


2

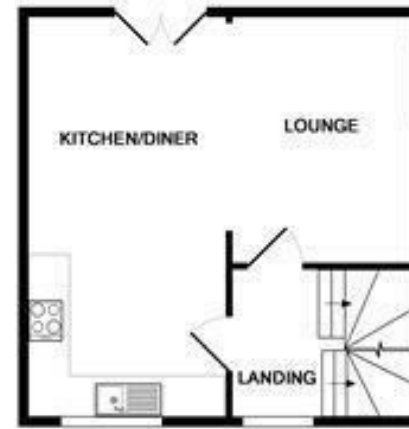


C71

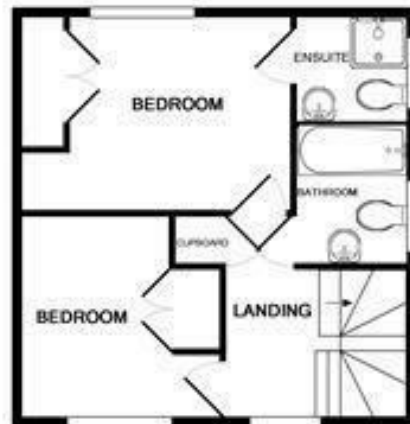




GROUND FLOOR



1ST FLOOR



2ND FLOOR

Whilst every attempt has been made to ensure the accuracy of the floor plan contained here, measurements of doors, windows, rooms and any other items are approximate and no responsibility is taken for any error, omission, or mis-statement. This plan is for illustrative purposes only and should be used as such by any prospective purchaser. The services, systems and appliances shown have not been tested and no guarantee as to their operability or efficiency can be given.
Made with Metropix ©2019

Directions To Property

Contact Us

Millerson Estate Agents
50 Fore Street
Hayle
Cornwall
TR27 4DY
E: hayle@millerson.com
T: 01736 754115
www.millerson.com

Valuation Request



Energy Efficiency Rating		Current	Potential
Very energy efficient - lower running costs			
(92 plus) A			
(81-91) B			
(69-80) C		71	83
(55-68) D			
(39-54) E			
(21-38) F			
(1-20) G			
Not energy efficient - higher running costs			
England & Wales		EU Directive 2002/91/EC	