

Jonathan Hunt

LETTING AGENCY

20 High Street Ware SG12 9BX

Tel: 01920 411090

8 High Street Buntingford SG9 9AG

Tel: 01763 272727

info@jonathan-hunt.co.uk

www.jonathanhunt.co.uk



43 Mill Studio Crane Mead, Ware, SG12 9PY

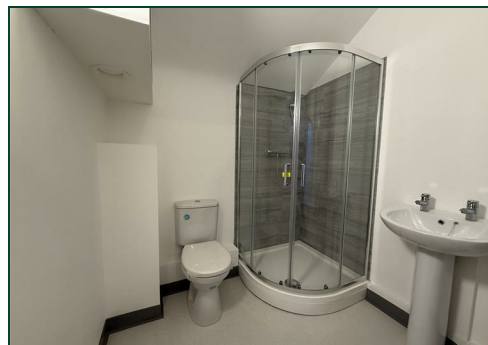
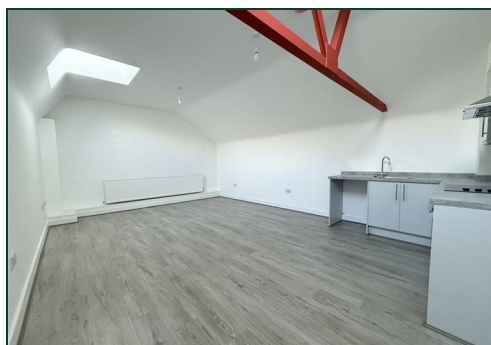
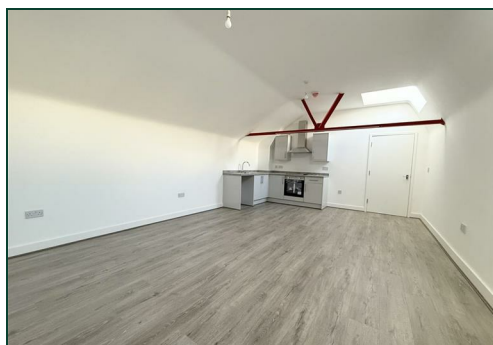
£1,000 Per Month

FINAL AVAILABLE STUDIO this BRAND NEW STUDIO apartment is on the 4th floor. Situated in this new RIVERSIDE residential development, the property is within close WALKING DISTANCE to Ware High Street and mainline train station connecting to London Liverpool Street. White goods and parking are available. The property currently benefits from communal heating with a fixed monthly charge so you can better budget your costs.

AVAILABLE NOW

REFERENCES - Please only enquiry if you pass the reference criteria

- Gross Income: Minimum £30,000
- NO CCJ's, IVA's or history of bad credit
- Positive landlord reference (if applicable)



Buntingford Branch - Company No. 10303541 VAT No. 10303541

Ware Branch - Company No. 4759215 VAT No. 700174975

Open Plan Living and Sleeping 20'6" x 14'0" (6.27 x 4.29)

Shower Room



Energy Efficiency Rating		
	Current	Potential
Very energy efficient - lower running costs		
(92 plus) A		
(81-91) B		
(69-80) C	71	71
(55-68) D		
(39-54) E		
(21-38) F		
(1-20) G		
Not energy efficient - higher running costs		
England & Wales		EU Directive 2002/91/EC

Environmental Impact (CO ₂) Rating		
	Current	Potential
Very environmentally friendly - lower CO ₂ emissions		
(92 plus) A		
(81-91) B		
(69-80) C		
(55-68) D		
(39-54) E		
(21-38) F		
(1-20) G		
Not environmentally friendly - higher CO ₂ emissions		
England & Wales		EU Directive 2002/91/EC

