

Jonathan Hunt

— LETTING AGENCY —

20 High Street Ware SG12 9BX

Tel: 01920 411090

8 High Street Buntingford SG9 9AG

Tel: 01763 272727

info@jonathan-hunt.co.uk

www.jonathanhunt.co.uk



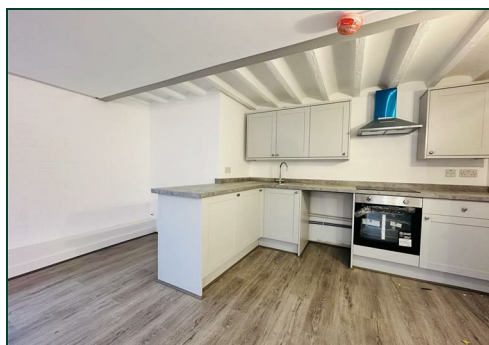
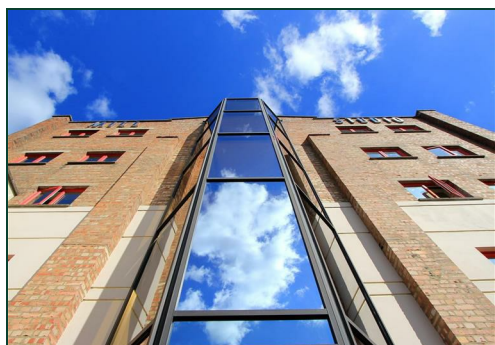
19 Mill Studio Crane Mead, Ware, SG12 9PY

£1,500 Per Month

JONATHAN HUNT LETTINGS are delighted to present this two-bedroom first floor apartment, located within a new riverside development. Just a short walk from Ware High Street and the mainline train station with direct links to London Liverpool Street, this property offers both convenience and modern living.

This is the final apartment available in this specific layout, offering a unique opportunity to secure one of the most sought-after designs in the development. Other apartment layouts are still available – please contact us for details.

The property features two well-proportioned bedrooms, a modern kitchen with white goods included, and allocated parking. It also benefits from communal heating with a fixed monthly charge, helping you to easily manage and budget your living costs.



Buntingford Branch - Company No. 10303541 VAT No. 10303541

Ware Branch - Company No. 4759215 VAT No. 700174975

Open Plan Living 21'5" x 13'6" (6.53 x 4.14)

Bedroom 1 12'9" x 8'5" (3.89 x 2.57)

Bedroom 2 14'11" x 6'5" (4.57 x 1.98)

Shower Room



Energy Efficiency Rating		
	Current	Potential
Very energy efficient - lower running costs		
(92 plus) A		
(81-91) B		
(69-80) C		
(55-68) D		
(39-54) E		
(21-38) F		
(1-20) G		
Not energy efficient - higher running costs		
England & Wales	EU Directive 2002/91/EC	

Environmental Impact (CO ₂) Rating		
	Current	Potential
Very environmentally friendly - lower CO ₂ emissions		
(92 plus) A		
(81-91) B		
(69-80) C		
(55-68) D		
(39-54) E		
(21-38) F		
(1-20) G		
Not environmentally friendly - higher CO ₂ emissions		
England & Wales	EU Directive 2002/91/EC	

