



Victoria Street, London SW1H

Price £1,100 per week - Furnished







Description

A spacious and well presented second floor apartment (with lift) in this portered development in the heart of Victoria.

The property consists of a primary bedroom with en-suite bathroom, two further double bedrooms, an additional bathroom, a reception/dining room and a fully fitted kitchen with breakfast area.

Artillery Mansions is excellently located close to the shops and transport links of Victoria, as well as the open space of St James's Park.

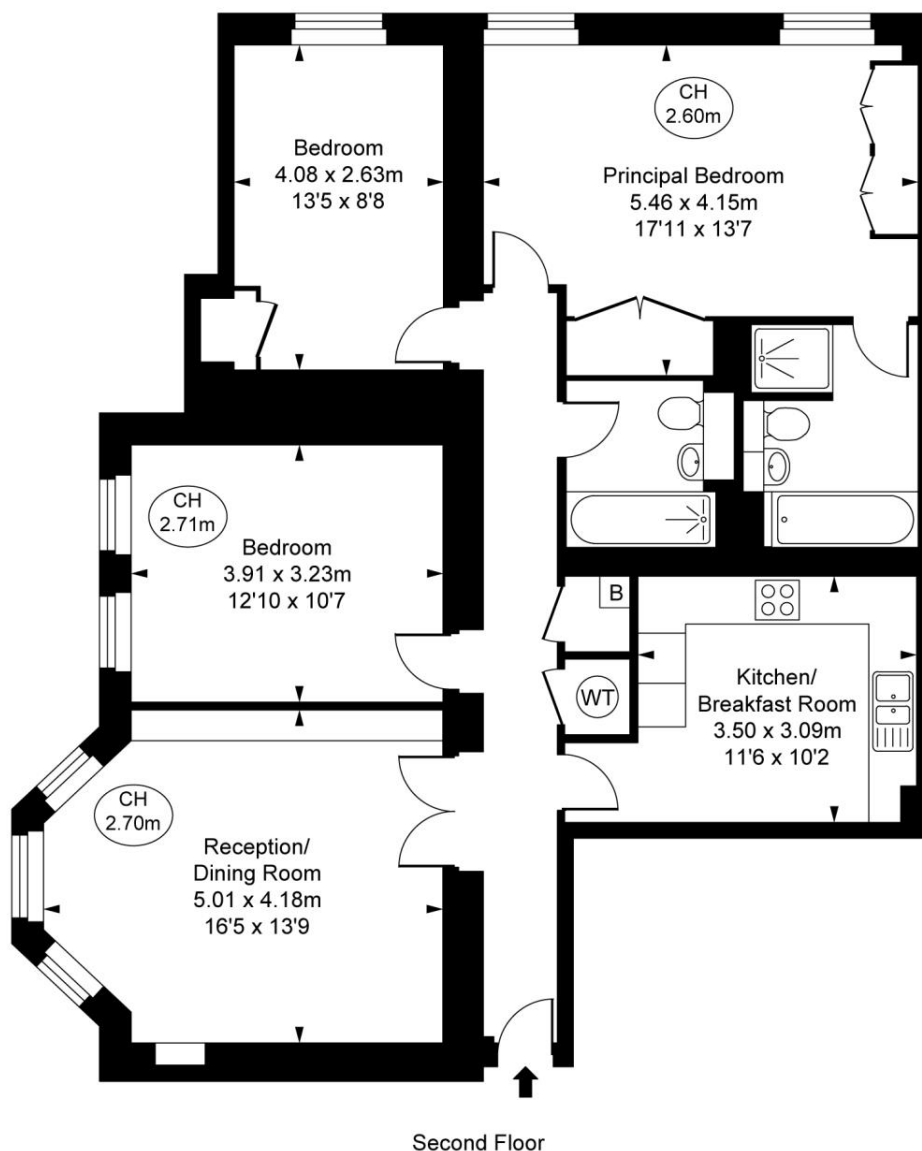
Rent is payable on a monthly basis and you may be required to pay more than a month's rent in advance, depending on your circumstances. You will be required to pay a 1 week holding deposit following a successful offer. Utility bills, council tax, telephone line and broadband are not included in the rent. As well as paying the rent, you may also be required to make some additional permitted payments. If your tenancy does not qualify as an AST, additional fees may apply. Please visit jll.co.uk/fees for details of fees which may be payable when renting a property.

- 3 Double bedrooms
- 2 Bathrooms (1 en suite)
- Reception/Dining room
- Fully fitted kitchen with breakfast area
- Second floor
- Lift
- Porter
- Approx. 1,152 sq ft (107 sq m)
- EPC: C
- Council tax: Band H

Floorplan

1,152 sq ft | 107 sq m

Artillery Mansions,
Victoria Street, SW1H
Approximate Gross Internal Area
108.31 sq m / 1,166 sq ft
(CH = Ceiling Heights)



Second Floor

This plan is not to scale. It is for guidance and not for valuation purposes.
All measurements and areas are approximate only, and have been prepared in accordance with the current edition of the RICS Code of Measuring Practice.
© Fulham Performance

Knightsbridge
174 Brompton Road,
London SW3 1HP
+4420 7306 1600
SalesKnightsbridge@jll.com

Urban living, your way.

jll.co.uk/residential

© 2019 Jones Lang LaSalle IP, Inc. All rights reserved. All information contained herein is from sources deemed reliable; however, no representation or warranty is made to the accuracy thereof.

