

Cromwell Road, London SW7

Price £585 per week - Furnished







Description

A high specification third floor apartment (with lift) in this popular and secure building with 24/7 porter. The apartment benefits from plenty of natural light, a south east facing balcony, hard wood flooring and excellent storage. The property comprises of a reception room with sliding doors onto the balcony, fully fitted kitchen, bedroom with built in wardrobes and under bed storage and a modern shower room. The property is ideally located for Gloucester Road Underground Station and the many restaurants and shops that surround it.

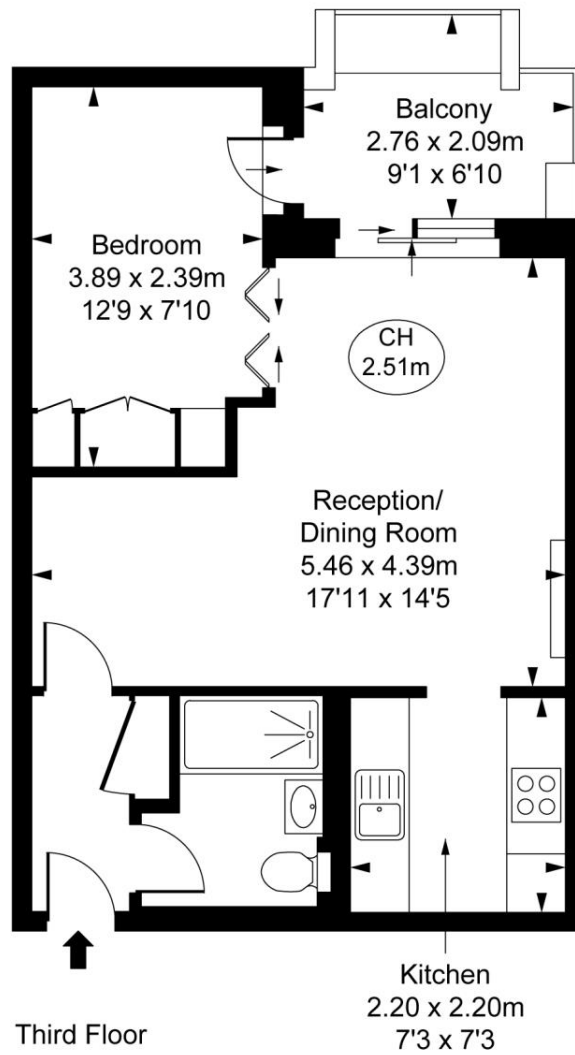
Rent is payable on a monthly basis and you may be required to pay more than a month's rent in advance, depending on your circumstances. You will be required to pay a 1 week holding deposit following a successful offer. Utility bills, council tax, telephone line and broadband are not included in the rent. As well as paying the rent, you may also be required to make some additional permitted payments. If your tenancy does not qualify as an AST, additional fees may apply. Please visit jll.co.uk/fees for details of fees which may be payable when renting a property.

- Bedroom
- Shower room
- Reception room
- Fully fitted kitchen
- South east facing balcony
- Third floor
- Lift
- 24/7 porter
- Furnished
- Approx. 442 sq ft (41 sq m)

Floorplan

442 sq ft | 41 sq m

Point West,
Cromwell Road, SW7
Approximate Gross Internal Area
41.10 sq m / 442 sq ft
(CH = Ceiling Heights)



This plan is not to scale. It is for guidance and not for valuation purposes.
All measurements and areas are approximate only, and have been prepared in accordance with the current edition of the RICS Code of Measuring Practice.
© Fulham Performance

Knightsbridge
174 Brompton Road,
London SW3 1HP
+4420 7306 1600
SalesKnightsbridge@jll.com

Urban living, your way.

jll.co.uk/residential

© 2019 Jones Lang LaSalle IP, Inc. All rights reserved. All information contained herein is from sources deemed reliable; however, no representation or warranty is made to the accuracy thereof.

