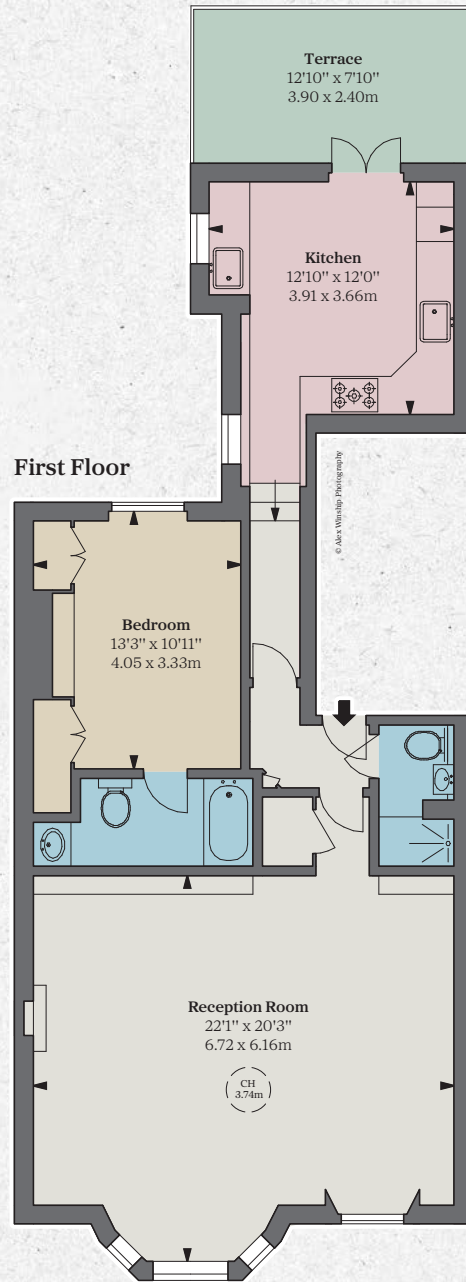




Bina Gardens

LONDON SW5



Approximate Gross
Internal Area
893 sq ft / 82.96 sq m



A delightful one bedroom apartment
of 893 sq ft / 83 sq m situated on
the first floor, with a roof terrace.

The apartment has a grand reception room
with a floor-to ceiling height of 3.74m, separate
kitchen, a double bedroom and two bathrooms
(one en suite). There is no lift in the building.

Bina Gardens is a quiet street in the Royal
Borough of Kensington and Chelsea, just off
the Old Brompton Road. South Kensington
and Gloucester Road underground
stations are a short walk away.

ACCOMMODATION

- Double bedroom
- 2 Bathrooms (1 en suite)
- Reception room
- Kitchen
- Roof terrace

TERMS

Guide Price: £1,950,000

Tenure: Leasehold with approximately
84 years remaining (expiring 25/12/2107)

Service Charge: £2,400 per annum (estimated)

Ground Rent: £800 per annum (with reviews)

Local Authority: Royal Borough of
Kensington and Chelsea

Council Tax: Band G

EPC: D



SUSAN METCALFE
RESIDENTIAL

020 7581 3349

info@susanmetcalfe.com
susanmetcalfe.com



JLL Knightsbridge
knightsbridge@eu.jll.com | 020 7306 1600

JLL Chelsea
chelsea@eu.jll.com | 020 7399 5010

jll.co.uk/residential