



Eaton Place, London SW1X

Price £1,275 per week - Furnished







Description

A charming second floor flat (with lift) in this impressive period building in Belgravia. The property consists of one double bedroom, one single bedroom/study, one bathroom, Reception room and a fully fitted kitchen. Further benefits include oak flooring in the reception room and a wonderful roof terrace.

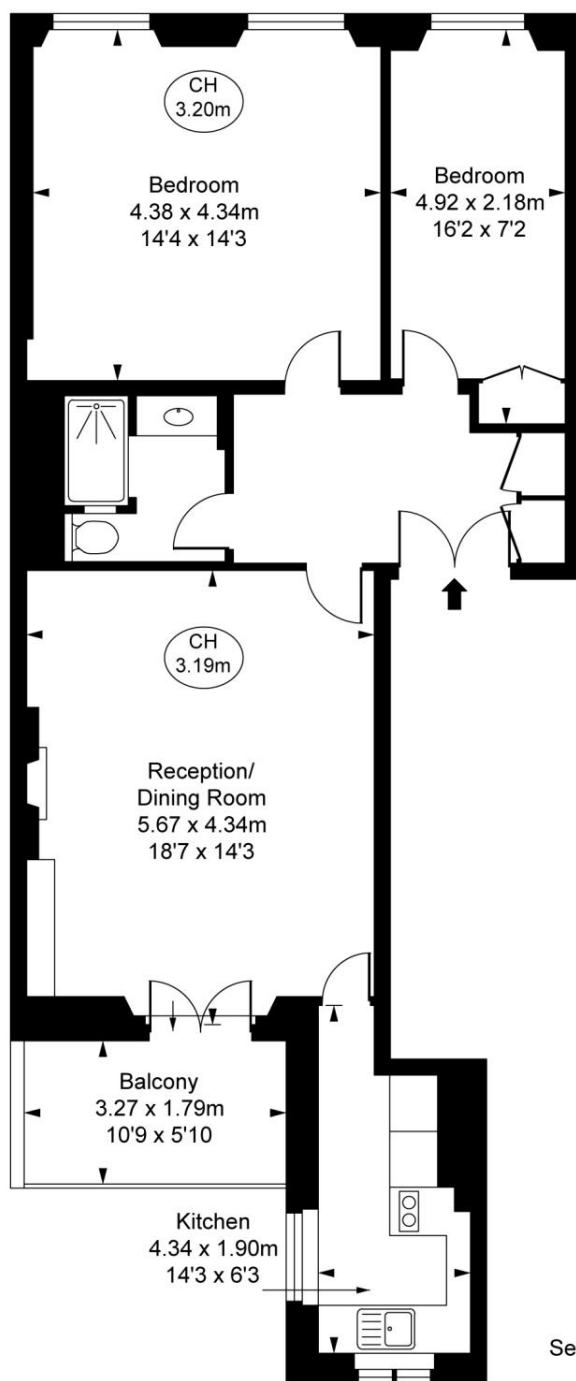
Eaton Place is conveniently located between Belgrave Square and Eaton Square and is only a stones throw from Sloane Street and the excellent shopping, restaurants and transport facilities of this highly prestigious area.

Rent is payable on a monthly basis and you may be required to pay more than a month's rent in advance, depending on your circumstances. You will be required to pay a 1 week holding deposit following a successful offer. Utility bills, council tax, telephone line and broadband are not included in the rent. As well as paying the rent, you may also be required to make some additional permitted payments. If your tenancy does not qualify as an AST, additional fees may apply. Please visit jll.co.uk/fees for details of fees which may be payable when renting a property.

- 2 Bedrooms
- 1 Bathroom
- Reception room
- Fully fitted kitchen
- Roof terrace
- Second floor
- Furnished
- Approx. 804 sq ft (74 sq m)
- EPC: D
- Council Tax: Band H

Floorplan

804 sq ft | 75 sq m



Eaton Place, SW1X
Approximate Gross Internal Area
74.66 sq m / 804 sq ft
(CH = Ceiling Heights)



Second Floor

This plan is not to scale. It is for guidance and not for valuation purposes.
All measurements and areas are approximate only, and have been prepared in accordance with the current edition of the RICS Code of Measuring Practice.
© Fulham Performance

Knightsbridge
174 Brompton Road,
London SW3 1HP
+4420 7306 1600
SalesKnightsbridge@jll.com

Urban living, your way.

jll.co.uk/residential

© 2019 Jones Lang LaSalle IP, Inc. All rights reserved. All information contained herein is from sources deemed reliable; however, no representation or warranty is made to the accuracy thereof.

