

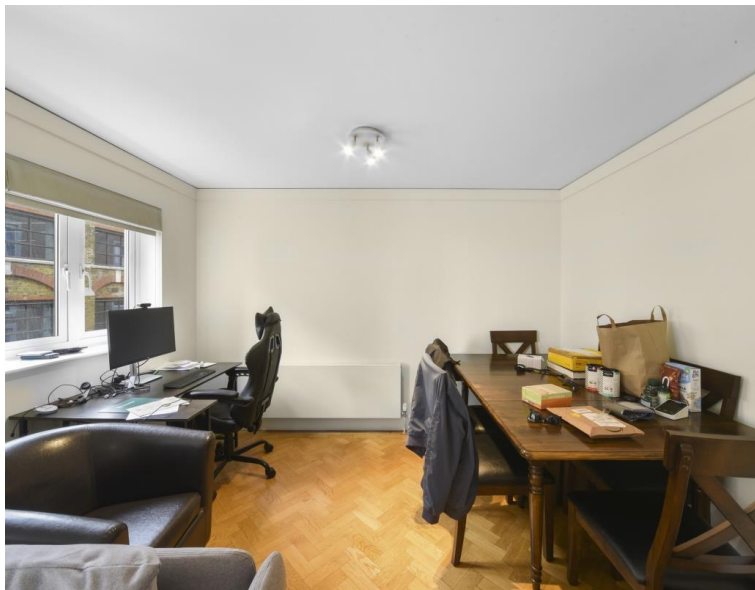


Victoria Street, London SW1H

Price £750 per week - Furnished







Description

A spacious seventh floor apartment (with lift) in this well maintained building in the heart of Victoria. The property consists of one double bedroom, separate bathroom, reception room and a separate kitchen.

Artillery Mansions is part period red brick mansion block and part new build and therefore has the modern advantages of 24 hour concierge, whilst still retaining its period grandeur. There is also allocated parking included in the rent.

Rent is payable on a monthly basis and you may be required to pay more than a month's rent in advance, depending on your circumstances. You will be required to pay a 1 week holding deposit following a successful offer. Utility bills, council tax, telephone line and broadband are not included in the rent. As well as paying the rent, you may also be required to make some additional permitted payments. If your tenancy does not qualify as an AST, additional fees may apply. Please visit jll.co.uk/fees for details of fees which may be payable when renting a property.

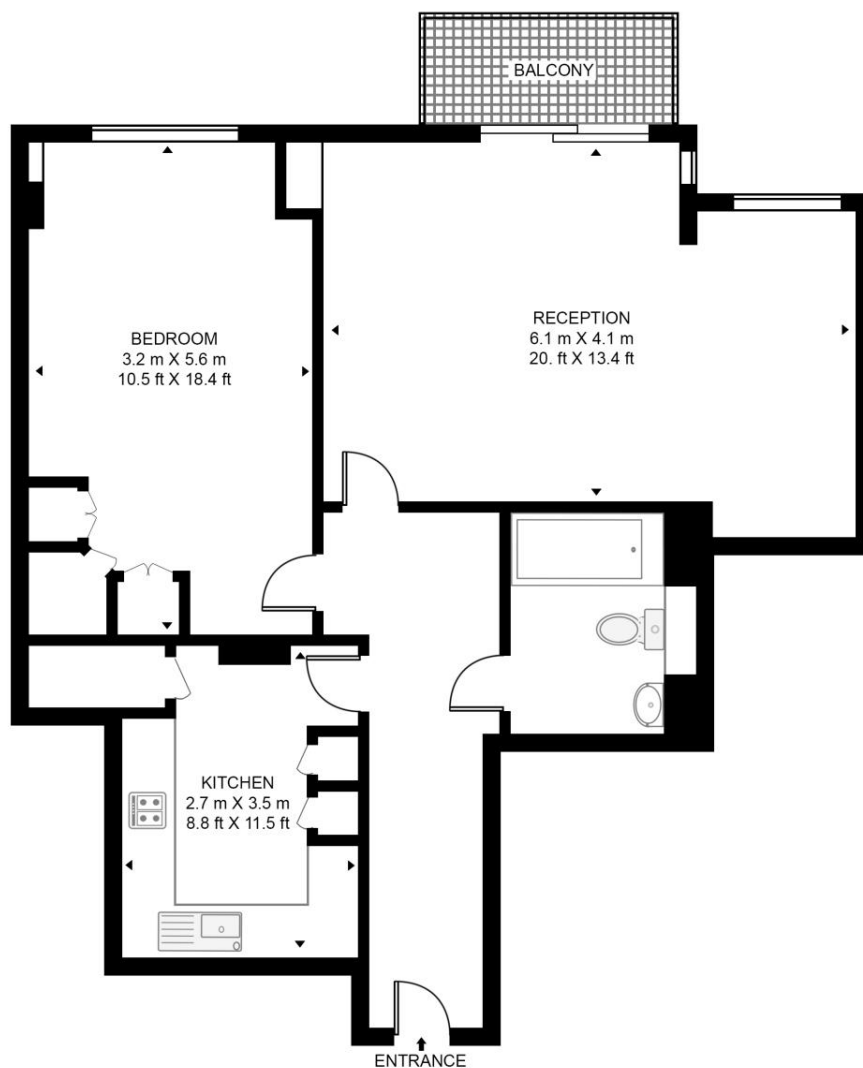
- Double bedroom
- Bathroom
- Reception room
- Separate kitchen
- Parking not included
- 24 Hour concierge
- Approx. 735 sq ft (68.3 sq m)
- Furnished
- EPC: B
- Council Tax: Band F

Floorplan

735 sq ft | 68 sq m

ARTILLERY MANSIONS, 75 VICTORIA STREET

APPROXIMATE GROSS INTERNAL FLOOR AREA 735 SQ.FT (68.3 SQ.M)



SEVENTH FLOOR



This floor plan has been defined by the RICS Code of Measurement. This floor plan and all others are for approximate representative purposes only and upon usage is agreed to as such by the client.

WWW: hdvirtualart.com | TEL: 0203.974.1567 | EMAIL: info@hdvirtualart.com

Knightsbridge
174 Brompton Road,
London SW3 1HP
+4420 7306 1600
SalesKnightsbridge@jll.com

Urban living, your way.

jll.co.uk/residential

© 2019 Jones Lang LaSalle IP, Inc. All rights reserved. All information contained herein is from sources deemed reliable; however, no representation or warranty is made to the accuracy thereof.

