



Montrose Court, London SW7

Price £235 per week - Furnished







Description

A modern studio in this portered building on Exhibition Road. The property consists of reception room/bedroom, kitchenette and shower room (please note the shower room is situated across the communal corridor to the flat itself, but is private and has its own key). Montrose Court is conveniently located for the many amenities of South Kensington and Knightsbridge.

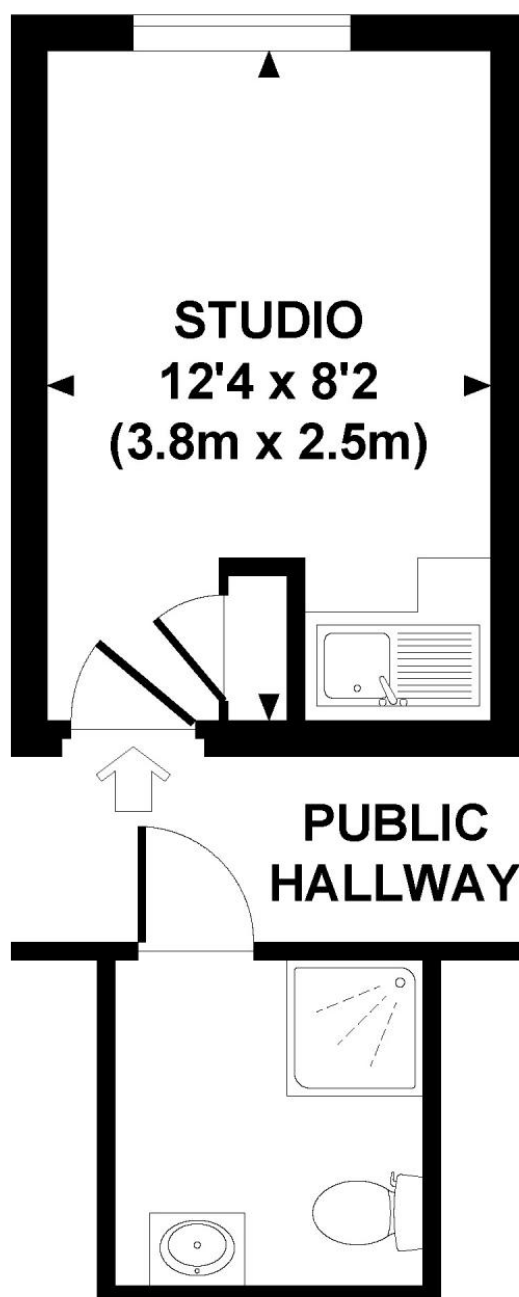
Rent is payable on a monthly basis and you may be required to pay more than a month's rent in advance, depending on your circumstances. You will be required to pay a 1 week holding deposit following a successful offer. Utility bills, council tax, telephone line and broadband are not included in the rent. As well as paying the rent, you may also be required to make some additional permitted payments. If your tenancy does not qualify as an AST, additional fees may apply. Please visit jll.co.uk/fees for details of fees which may be payable when renting a property.

- Reception / bedroom
- Kitchenette
- Shower room
- Porter
- Ground floor
- Furnished
- Approx. 135 sq ft (13 sq m)
- EPC: D
- Council Tax: Band C
- Holding Deposit: £235

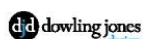
Floorplan

135 sq ft | 13 sq m

Approx. gross internal area
135 Sq Ft. / 13 Sq M.



LOWER GROUND FLOOR



Every attempt has been made to ensure the accuracy of this floor plan however, measurements are approximate and for illustration purposes only. Not to scale. Photography, floor plans & brochures © 2011 Dowling Jones Design Ltd - www.dowlingjonesdesign.com 020 7618 9933 / 07793 974 209

Knightsbridge
174 Brompton Road,
London SW3 1HP
+4420 7306 1600
SalesKnightsbridge@jll.com

Urban living, your way.

jll.co.uk/residential

© 2019 Jones Lang LaSalle IP, Inc. All rights reserved. All information contained herein is from sources deemed reliable; however, no representation or warranty is made to the accuracy thereof.

