



Alderney Street, London SW1V

Price £575 per week - Furnished





Description

A wonderful first floor flat in this converted terrace house close to the amenities of Victoria. The property consists of one double bedroom with separate dressing room/study, one bathroom, reception room and a fully fitted kitchen. The property is light and bright and it is available on a furnished basis.

Rent is payable on a monthly basis and you may be required to pay more than a month's rent in advance, depending on your circumstances. You will be required to pay a 1 week holding deposit following a successful offer. Utility bills, council tax, telephone line and broadband are not included in the rent. As well as paying the rent, you may also be required to make some additional permitted payments. If your tenancy does not qualify as an AST, additional fees may apply. Please visit jll.co.uk/fees for details of fees which may be payable when renting a property.

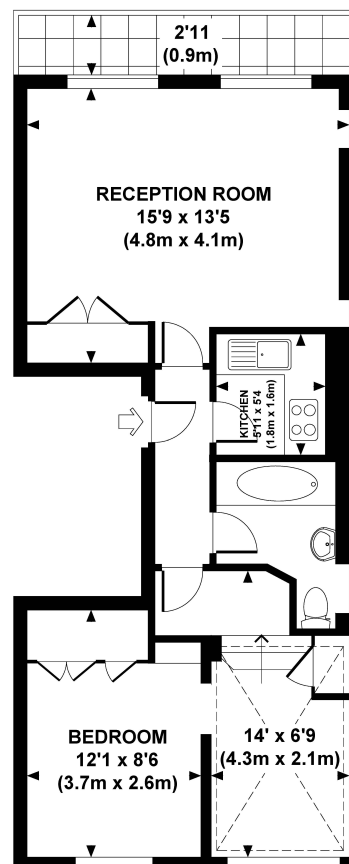
- Double bedroom
- Dressing room/study
- Bathroom
- Reception room
- Fully fitted kitchen
- Approx. 516 sq ft (47 sq m)
- Furnished
- EPC: C
- Council tax: Band F
- Deposit amount: £2,875 (estimate) and an initial holding deposit of 1 week's rent is payable to res



Floorplan

516 sq ft | 48 sq m

Approx. gross internal area
516 Sq.Ft. / 47.9 Sq.M.



FIRST FLOOR

All measurements are approximate and for illustration purposes only as defined by the RICS Code of Measuring Practice © 2013
Dowling Jones Design www.dowlingjones.com 020 7610 9933

Knightsbridge
174 Brompton Road,
London SW3 1HP
+4420 7306 1600
SalesKnightsbridge@jll.com

Urban living, your way.

jll.co.uk/residential

© 2019 Jones Lang LaSalle IP, Inc. All rights reserved. All information contained herein is from sources deemed reliable; however, no representation or warranty is made to the accuracy thereof.

