



## Ovington Gardens, London SW3

Price £692 per week - Furnished







## Description

A bright and spacious fourth floor flat (with lift) in this well maintained building in central Knightsbridge. The property consists of one double bedroom, one bathroom, reception room and a fully fitted kitchen. The flat benefits from wooden floors throughout and contemporary furnishings.

Rent is payable on a monthly basis and you may be required to pay more than a month's rent in advance, depending on your circumstances. You will be required to pay a 1 week holding deposit following a successful offer. Utility bills, council tax, telephone line and broadband are not included in the rent. As well as paying the rent, you may also be required to make some additional permitted payments. If your tenancy does not qualify as an AST, additional fees may apply. Please visit [jll.co.uk/fees](http://jll.co.uk/fees) for details of fees which may be payable when renting a property.

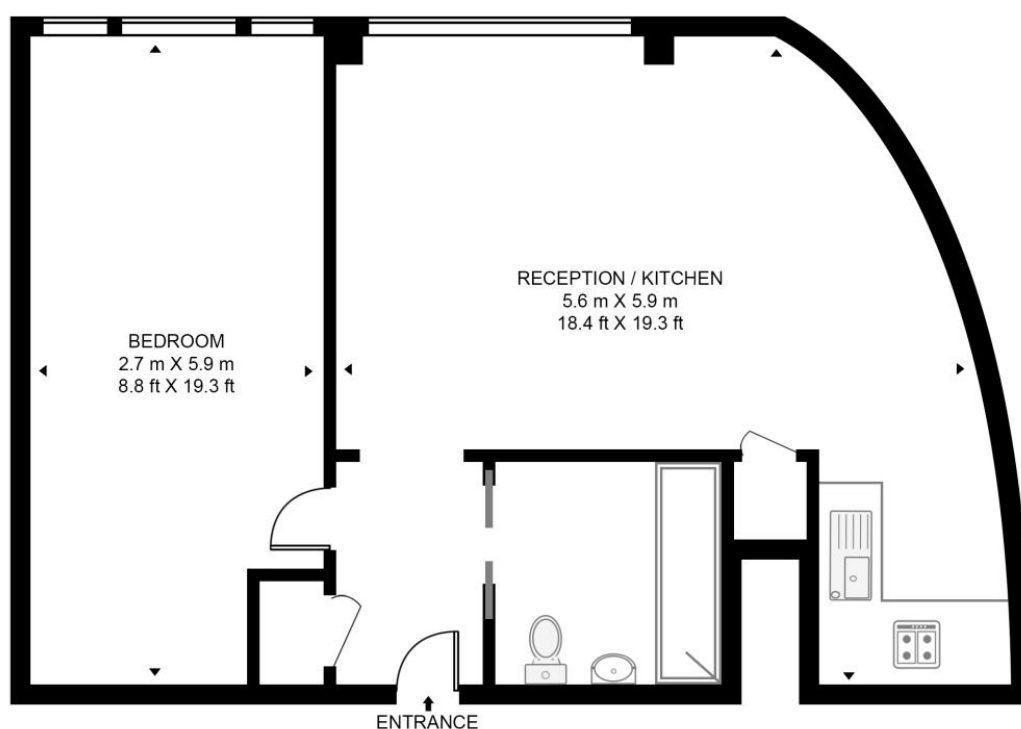
- One double bedroom
- One bathroom
- Fully fitted kitchen
- Reception room
- Wooden floors
- Lift access
- Furnished
- Approx. 537 sq ft (49.9 sq m)
- EPC: D
- Holding deposit: £692.31

# Floorplan

537 sq ft | 50 sq m

## HEREFORD HOUSE, OVINGTON GARDENS

APPROXIMATE GROSS INTERNAL FLOOR AREA 537 SQ.FT (49.9 SQ.M)



### FOURTH FLOOR



This floor plan has been defined by the RICS Code of Measurement. This floor plan and all others are for approximate representative purposes only and upon usage is agreed to as such by the client.

WWW: [hdvirtualart.com](http://hdvirtualart.com) | TEL: 0203.974.1567 | EMAIL: [info@hdvirtualart.com](mailto:info@hdvirtualart.com)

Knightsbridge  
174 Brompton Road,  
London SW3 1HP  
+4420 7306 1600  
[SalesKnightsbridge@jll.com](mailto:SalesKnightsbridge@jll.com)

*Urban living, your way.*

[jll.co.uk/residential](http://jll.co.uk/residential)

© 2019 Jones Lang LaSalle IP, Inc. All rights reserved. All information contained herein is from sources deemed reliable; however, no representation or warranty is made to the accuracy thereof.

