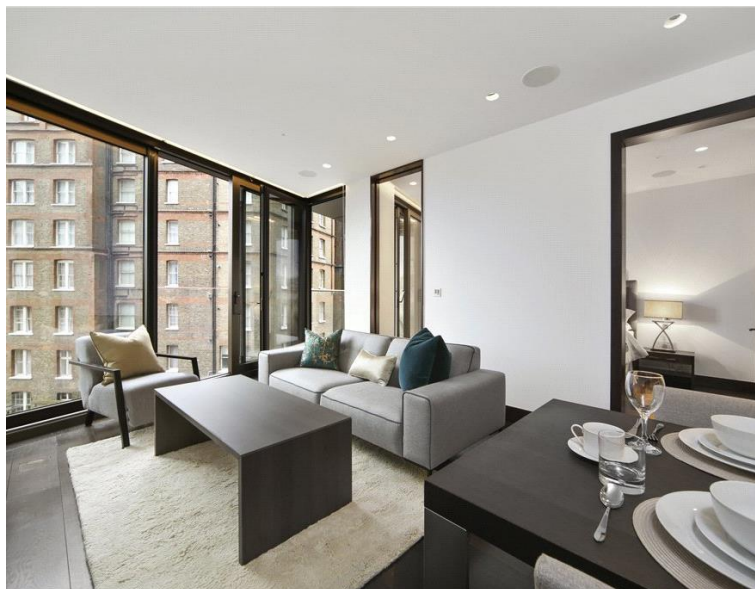




Kings Gate, London SW1E

Price £795 per week - Furnished







Description

A stunning second floor apartment (with lift) in this new and eagerly awaited development in the heart of Victoria. The property consists of one double bedroom, one shower room, reception room and a fully fitted, open plan kitchen. Designed and furnished to the highest of standards, the flat further benefits from wooden flooring in the reception room, a private terrace and 24 hour concierge. Kings Gate Walk is conveniently located for the shopping and transport facilities of Victoria and St James's Park and the open spaces of Green Park.

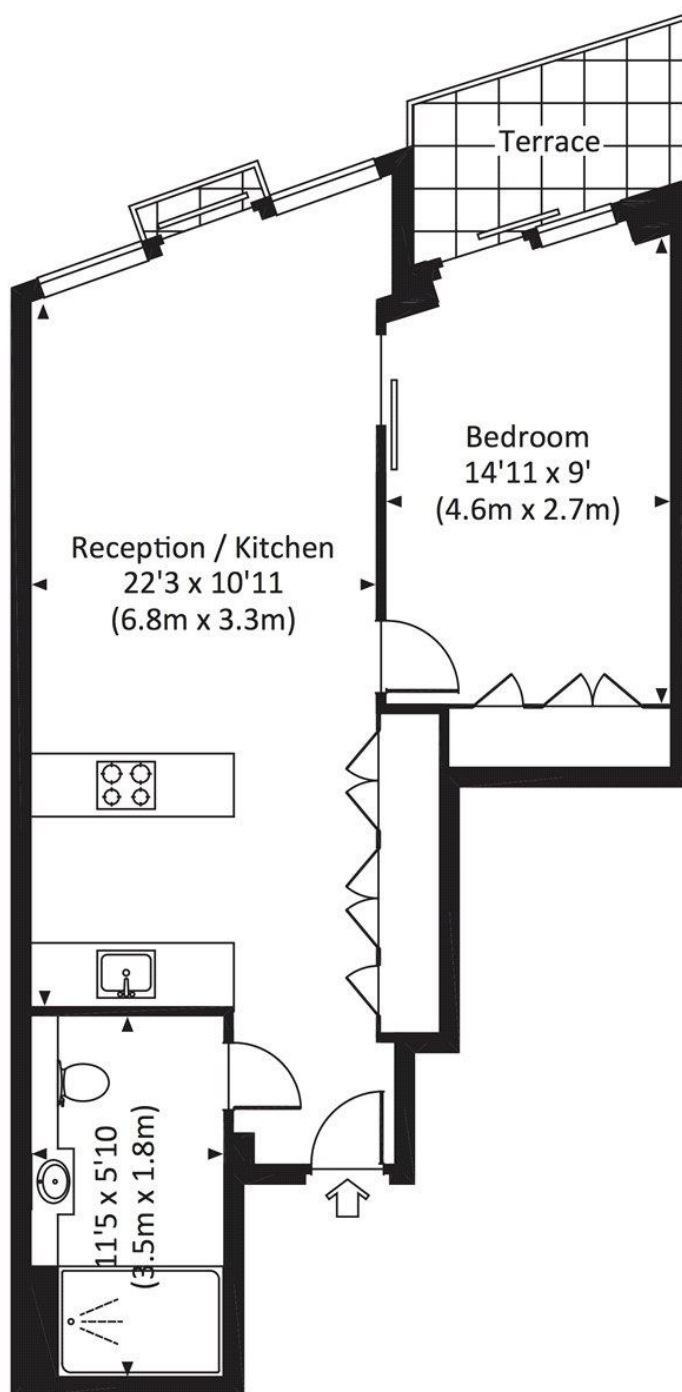
Rent is payable on a monthly basis and you may be required to pay more than a month's rent in advance, depending on your circumstances. You will be required to pay a 1 week holding deposit following a successful offer. Utility bills, council tax, telephone line and broadband are not included in the rent. As well as paying the rent, you may also be required to make some additional permitted payments. If your tenancy does not qualify as an AST, additional fees may apply. Please visit jll.co.uk/fees for details of fees which may be payable when renting a property.

- 1 Double bedroom
- 1 Shower room
- Reception room
- Open plan kitchen
- Terrace
- 24 Hour concierge
- Approx. 530 sq ft (49 sq m)
- Furnished
- EPC: B
- Council tax: Band F

Floorplan

530 sq ft | 49 sq m

Approx. gross internal area
530 Sq Ft. / 49.2 Sq M.



SECOND FLOOR



All measurements have been made in accordance with RICS Code of Measuring Practice which are approximate only and only for illustrative purposes. For the avoidance of doubt, Dowling Jones Design shall not be liable for any reliance on these measurements. © 2016 www.dowlingjones.com 020 7610 9933

Knightsbridge
174 Brompton Road,
London SW3 1HP
+4420 7306 1600
SalesKnightsbridge@jll.com

Urban living, your way.

jll.co.uk/residential

© 2019 Jones Lang LaSalle IP, Inc. All rights reserved. All information contained herein is from sources deemed reliable; however, no representation or warranty is made to the accuracy thereof.

