



## Buckingham Gate, London SW1E

Price £6,000 per week - Furnished









## Description

A beautifully presented fifteenth floor penthouse apartment which has been interior designed by TH2 Designs and offers spectacular views to the north, east and south of the City.

Accommodation comprises master bedroom with dressing area and en suite bathroom, two further double bedroom suites, fourth double bedroom, a further bathroom, guest cloakroom, a stylishly decorated reception room with dining area, a fully fitted kitchen with seating area and a media room. Further benefits include wooden flooring and marble back drops with floor to ceiling glass windows providing natural light and city views and 24 hour concierge service.

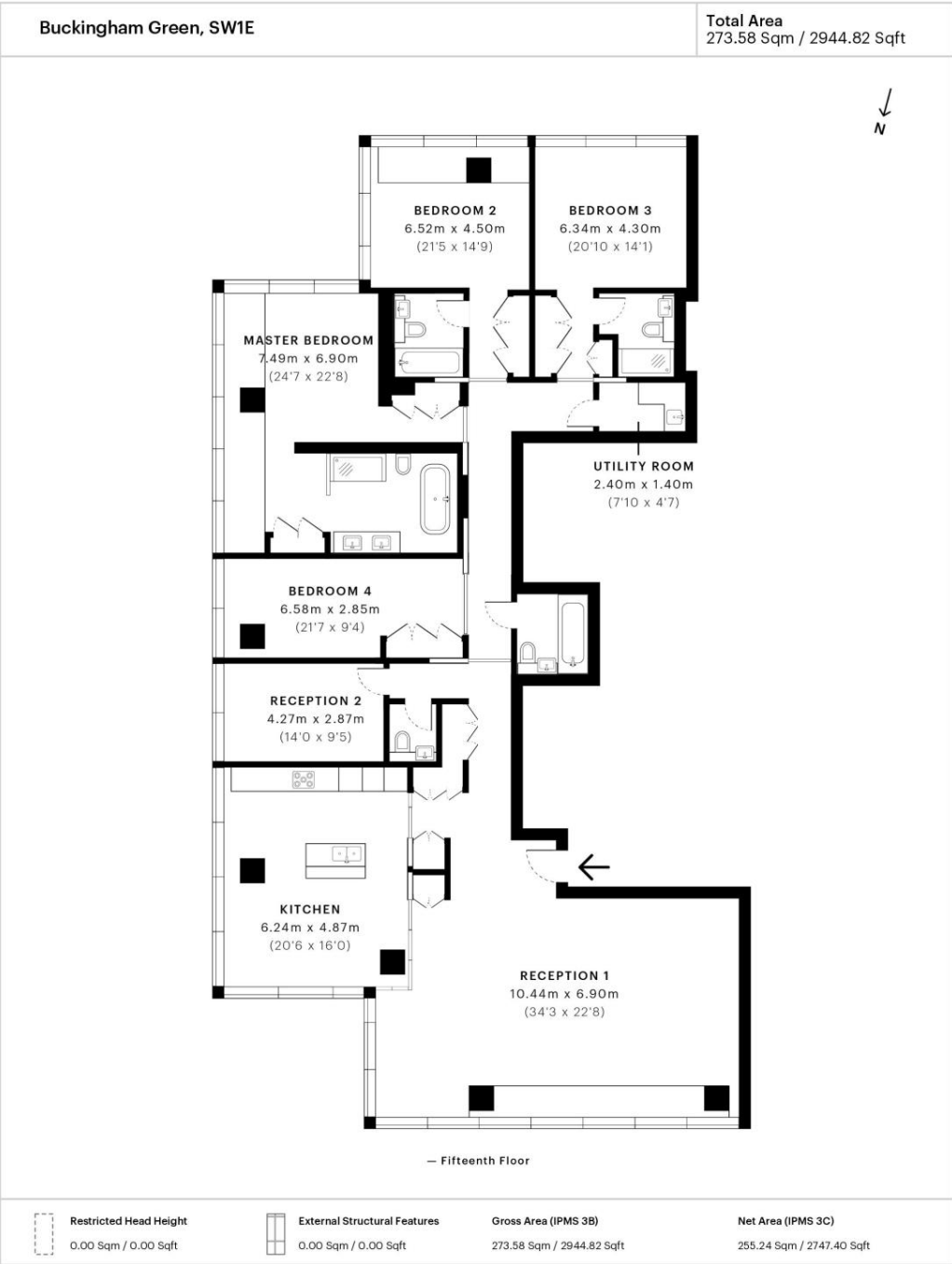
Rent is payable on a monthly basis and you may be required to pay more than a month's rent in advance, depending on your circumstances. You will be required to pay a 1 week holding deposit following a successful offer. Utility bills, council tax, telephone line and broadband are not included in the rent. As well as paying the rent, you may also be required to make some additional permitted payments. If your tenancy does not qualify as an AST, additional fees may apply. Please visit [jll.co.uk/fees](http://jll.co.uk/fees) for details of fees which may be payable when renting a property.

- 4 Double bedrooms
- 3 Bathrooms (2 en suite)
- 1 Shower room (en suite)
- Guest cloakroom
- Reception room
- Kitchen/dining room
- Media room
- Fifteenth floor
- Lift
- 24 Hour concierge



# Floorplan

2,944 sq ft | 274 sq m



Spec floor plan captured for JLL, Knightsbridge on 03/12/2018 using 79,001,514 laser scan points, accurate to +/- 3cm. Produced in accordance with Royal Institution of Chartered Surveyors Property Measurement Standards, incorporating International Property Measurement Standard (IPMS). If you intend to rely on any measurement in a transaction you should perform your own checks. Plot/Gardens illustrative only and excluded from all area calculations. SpecID: 5c013da81ab1ad19abd11594

**Restricted Head Height** = Limited use area under 1.5m. **External Structural Features** = Balconies, terraces or verandas or similar. **IPMS 3B** = gross internal area measured from the internal faces of external walls, including walls/obstructions and External Structural Features, excluding stairwell area above/below the ground floor. **IPMS 3C** = net area of IPMS 3B excluding internal walls/obstructions and stairwell area above/below the ground floor. **Total Area** = IPMS 3B gross area + stairwell area above/below ground floor of 0.00 Sqm / 0.00 Sqft.



Knightsbridge  
174 Brompton Road,  
London SW3 1HP  
+4420 7306 1600  
SalesKnightsbridge@jll.co.uk

Urban living, your way.

[jll.co.uk/residential](http://jll.co.uk/residential)

© 2019 Jones Lang LaSalle IP, Inc. All rights reserved. All information contained herein is from sources deemed reliable; however, no representation or warranty is made to the accuracy thereof.

