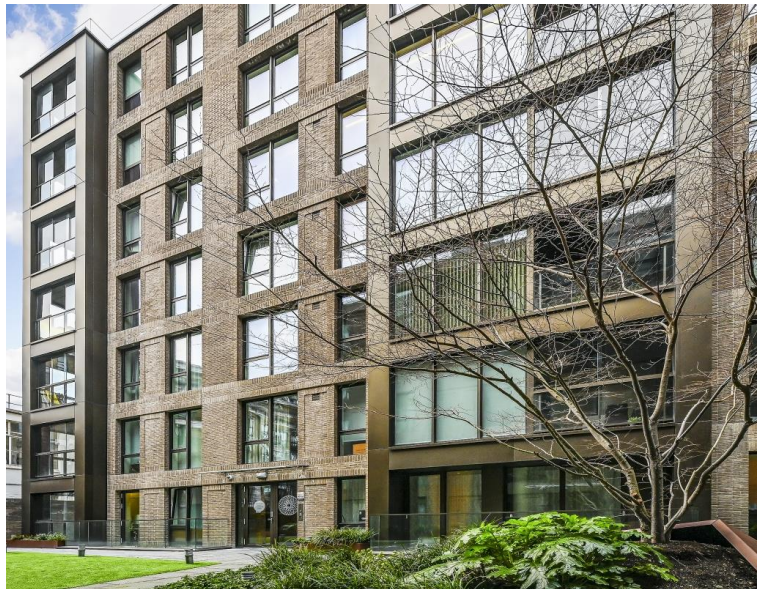
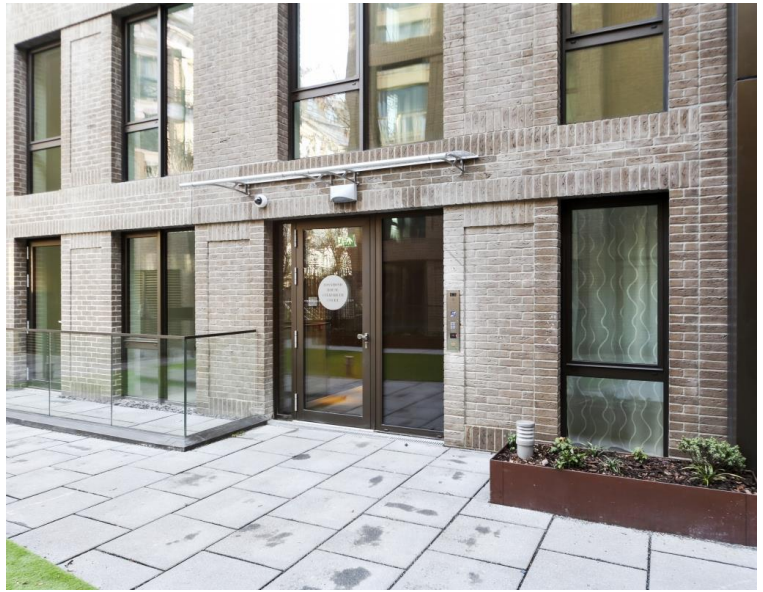


Rosamond House, London SW1P

Price £725 per week - Furnished







Description

A luxury first floor apartment in this landmark development in the heart of Westminster. The property comprises one double bedroom, one bathroom, reception room and a fully fitted, open plan kitchen. The apartment is offered fully furnished and benefits from comfort cooling, underfloor heating and a balcony.

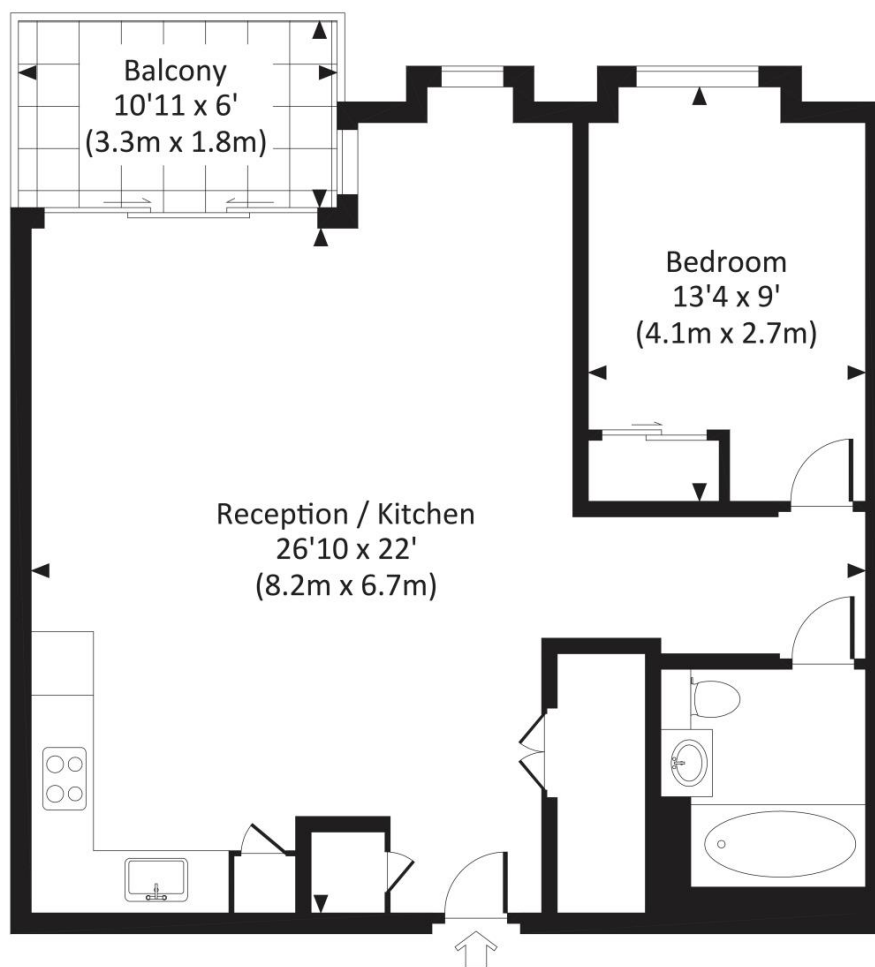
Rent is payable on a monthly basis and you may be required to pay more than a month's rent in advance, depending on your circumstances. You will be required to pay a 1 week holding deposit following a successful offer. Utility bills, council tax, telephone line and broadband are not included in the rent. As well as paying the rent, you may also be required to make some additional permitted payments. If your tenancy does not qualify as an AST, additional fees may apply. Please visit jll.co.uk/fees for details of fees which may be payable when renting a property.

- One bedroom
- One bathroom
- Reception
- Kitchen
- Comfort cooling
- Underfloor heating
- Balcony
- Furnished
- First floor
- Lift

Floorplan

655 sq ft | 61 sq m

Approx. gross internal area
655 Sq.Ft. / 60.9 Sq.M.



FIRST FLOOR



All measurements have been made in accordance with RICS Code of Measuring Practice which are approximate only and only for illustrative purposes. For the avoidance of doubt, Dowling Jones Design shall not be liable for any reliance on these measurements. © 2017 www.dowlingjones.com 020 7610 9933

Knightsbridge
174 Brompton Road,
London SW3 1HP
+4420 7306 1600
SalesKnightsbridge@jll.com

Urban living, your way.

jll.co.uk/residential

© 2019 Jones Lang LaSalle IP, Inc. All rights reserved. All information contained herein is from sources deemed reliable; however, no representation or warranty is made to the accuracy thereof.

