



FLAT 6

26-28 PONT STREET

KNIGHTSBRIDGE SW1X 0AB



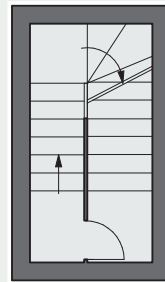
Approximate Gross Internal Area

1171 sq ft
108.88 sq m

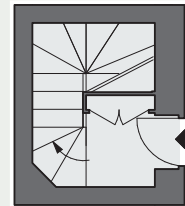
CH: Ceiling height

Floorplan for guidance only, not to scale or for valuations purposes. It must not be relied upon as a statement of fact. All measurements and areas are approximate and have been prepared in accordance with the current edition of the RICS Code of Measuring Practice.

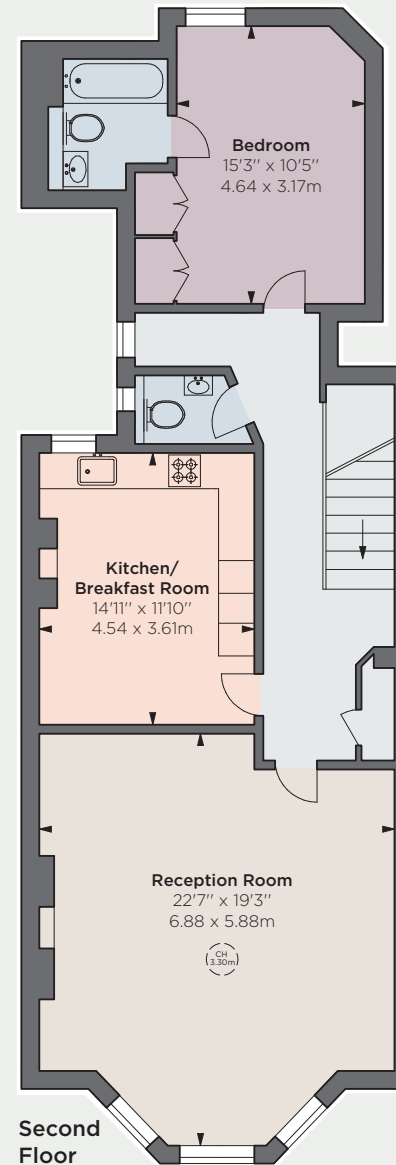
© Alex Winship Photography Ltd.



First Floor



Raised Ground Floor Entrance



Situated in the heart of one of London's most desirable locations, this elegant one-bedroom apartment offers a perfect blend of comfort and sophistication. The spacious reception room offers lots of natural light, creating a welcoming space.

The apartment benefits from a generously sized bedroom with an en-suite bathroom, a separate guest WC, reception room and kitchen.

Located on the sought-after Pont Street, residents enjoy the benefits of being within easy distance to the local shops, cafés, and excellent transport links. Pont Street is a very popular location in Knightsbridge, within easy reach of Harrods and the restaurants of Walton Street, as well as the King's Road. The luxury boutiques of Sloane Street are close by, and Knightsbridge tube station is within 500 metres, providing quick and direct access to Heathrow Airport and the West End.

Guide Price: £1,500,000

Tenure: 125 years from 30/11/2022

Service charge: For the financial year ending 31/12/25 the current service charge apportionment is 17.27% for Schedule 1 and 9.28% for Schedule 2. The total service charge payable for the current financial year is therefore £8,106.78

Local Authority: The Royal Borough of Kensington & Chelsea

Council Tax: Band G

EPC: Rating E



JLL Knightsbridge
knightsbridge@eu.jll.com | 020 7306 1600
JLL Chelsea
chelsea@eu.jll.com | 020 7399 5010
jll.co.uk/residential

Savills Knightsbridge
knightsbridge_sales@savills.com
020 7581 5234
Savills Sloane Street
sloanestreet@savills.com
020 7730 0822
savills.co.uk

